

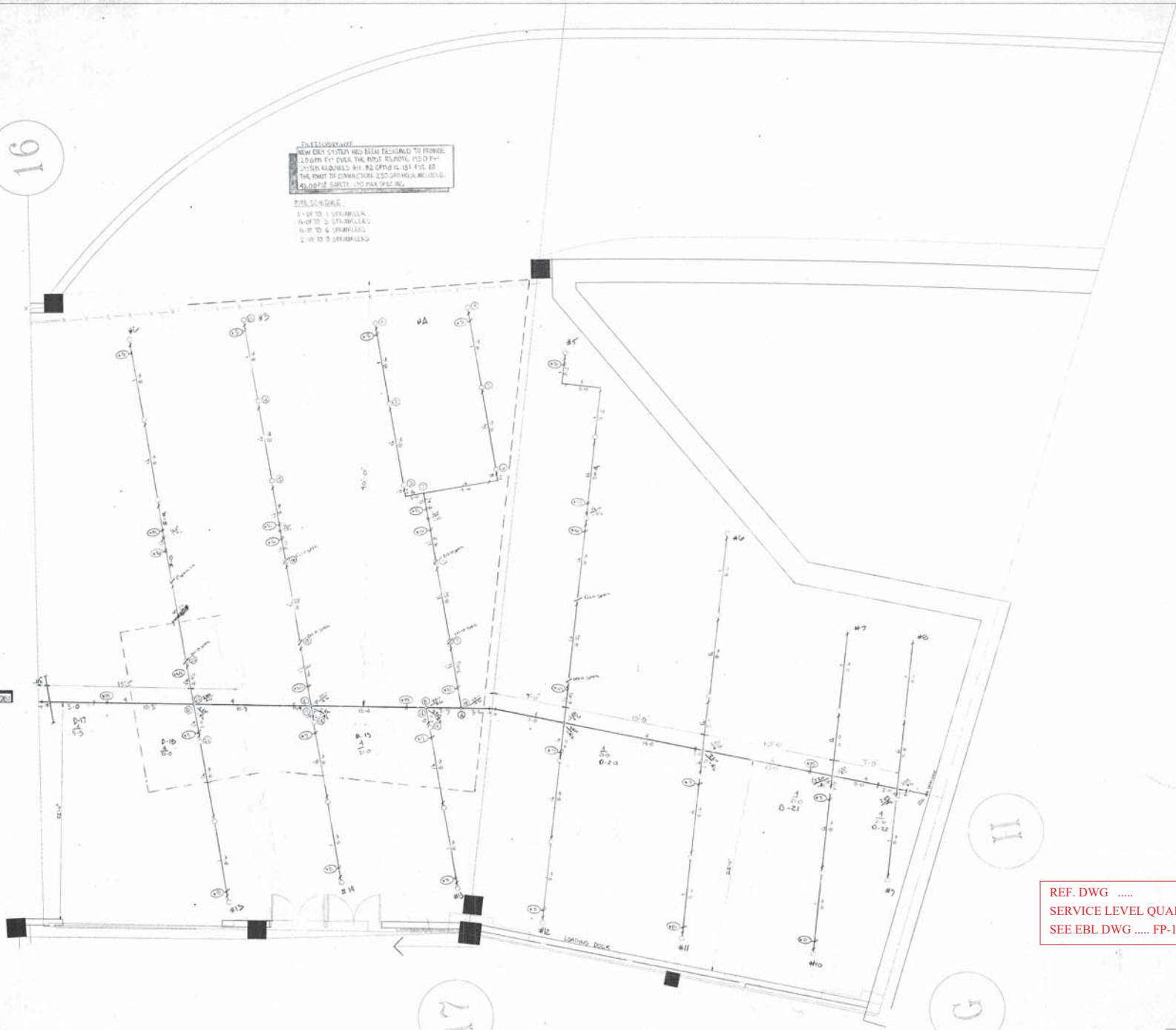
16

18

INSTALLATION
 NEW DRY SYSTEM HAS BEEN DESIGNED TO PROVIDE
 10 GPM @ 1.0" OVER THE ROOF EXTERIOR (150 PSI @
 200 FT) KNOWN AS #1. #2 OFFER IS 151 PSI AT
 THE POINT OF CONNECTION 250-DRY-RISK-WHOLE.
 4) DRY PIPE SAFETY AND MAX PRESSURE

PIPE SCHEDULE
 1" TO 2" STEELWELL
 2" TO 4" STEELWELL
 4" TO 6" STEELWELL
 2" TO 4" STEELWELL

SET DATE: 4-20



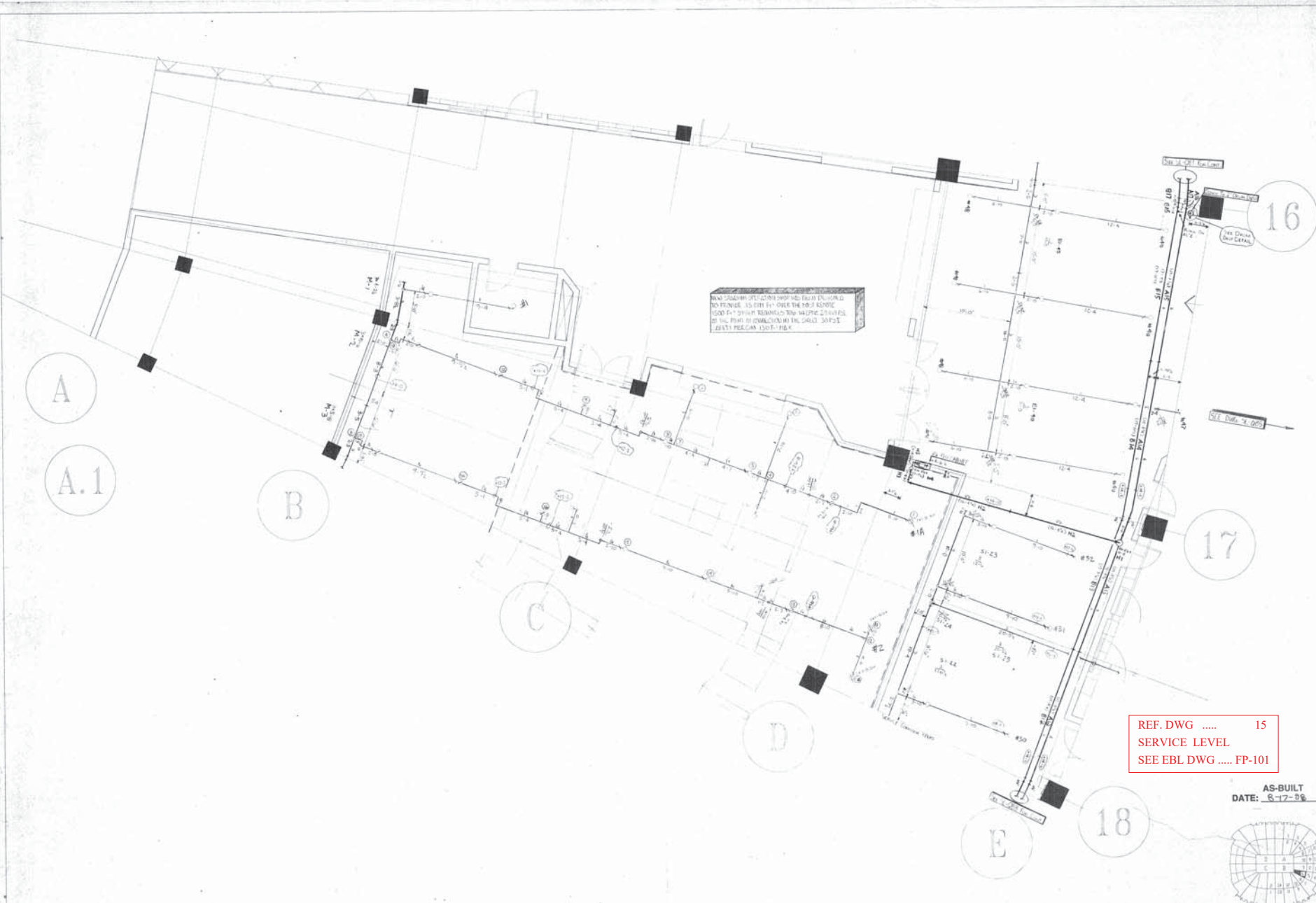
REF. DWG 14
 SERVICE LEVEL QUAD B
 SEE EBL DWG FP-101

AS-BUILT
 DATE: 8-17-35



BALTIMORE RAVENS STADIUM AT CAMDEN YARDS, BALTIMORE, MD SERVICE LEVEL, QUAD B, SECTION 4 CAPITAL SPRINKLER CONTRACTING, INC. 6600 DORRIN ROAD COLUMBIA, MD 21046 PHONE: (410) 991-1234 FAX: (410) 991-2378																																					
RECORD OF TASK COMPLETION <table border="1"> <thead> <tr> <th>TASK</th> <th>DATE</th> <th>BY</th> <th>STATUS</th> </tr> </thead> <tbody> <tr> <td>SPRINKLER</td> <td>CAPITAL SPRINKLER</td> <td>DATE</td> <td>STATUS</td> </tr> <tr> <td>PLUMBER</td> <td>PRICE & KEAT</td> <td>DATE</td> <td>STATUS</td> </tr> <tr> <td>SHEET METAL</td> <td>PRICE & KEAT</td> <td>DATE</td> <td>STATUS</td> </tr> <tr> <td>ELECTRICIAN</td> <td>ENTWISLER</td> <td>DATE</td> <td>STATUS</td> </tr> <tr> <td>OWNER</td> <td>BOE WATTS & FINESTON</td> <td>DATE</td> <td>STATUS</td> </tr> </tbody> </table>	TASK	DATE	BY	STATUS	SPRINKLER	CAPITAL SPRINKLER	DATE	STATUS	PLUMBER	PRICE & KEAT	DATE	STATUS	SHEET METAL	PRICE & KEAT	DATE	STATUS	ELECTRICIAN	ENTWISLER	DATE	STATUS	OWNER	BOE WATTS & FINESTON	DATE	STATUS	<table border="1"> <tr> <td>DESIGNER</td> <td>G. FLORES/T. PARDHAM</td> </tr> <tr> <td>SCALE</td> <td>1/4" = 1'-0"</td> </tr> <tr> <td>CHECK BY</td> <td></td> </tr> <tr> <td>FILE NUMBER</td> <td>0817</td> </tr> <tr> <td>APPROVAL</td> <td>SL-0B4</td> </tr> <tr> <td>DATE</td> <td>08-16-27</td> </tr> </table>	DESIGNER	G. FLORES/T. PARDHAM	SCALE	1/4" = 1'-0"	CHECK BY		FILE NUMBER	0817	APPROVAL	SL-0B4	DATE	08-16-27
TASK	DATE	BY	STATUS																																		
SPRINKLER	CAPITAL SPRINKLER	DATE	STATUS																																		
PLUMBER	PRICE & KEAT	DATE	STATUS																																		
SHEET METAL	PRICE & KEAT	DATE	STATUS																																		
ELECTRICIAN	ENTWISLER	DATE	STATUS																																		
OWNER	BOE WATTS & FINESTON	DATE	STATUS																																		
DESIGNER	G. FLORES/T. PARDHAM																																				
SCALE	1/4" = 1'-0"																																				
CHECK BY																																					
FILE NUMBER	0817																																				
APPROVAL	SL-0B4																																				
DATE	08-16-27																																				
<table border="1"> <tr> <th>REVISION</th> <th>DATE</th> <th>BY</th> <th>DESCRIPTION</th> </tr> <tr> <td> </td> <td> </td> <td> </td> <td> </td> </tr> <tr> <td> </td> <td> </td> <td> </td> <td> </td> </tr> <tr> <td> </td> <td> </td> <td> </td> <td> </td> </tr> </table>		REVISION	DATE	BY	DESCRIPTION																																
REVISION	DATE	BY	DESCRIPTION																																		
<table border="1"> <tr> <td>CONTRACTOR</td> <td>CAPITAL SPRINKLER CONTRACTING, INC.</td> </tr> <tr> <td>ADDRESS</td> <td>6600 DORRIN ROAD COLUMBIA, MD 21046</td> </tr> <tr> <td>PHONE</td> <td>(410) 991-1234</td> </tr> <tr> <td>FAX</td> <td>(410) 991-2378</td> </tr> <tr> <td>EMAIL</td> <td> </td> </tr> <tr> <td>PROJECT</td> <td>BALTIMORE RAVENS STADIUM AT CAMDEN YARDS</td> </tr> <tr> <td>SHEET</td> <td> </td> </tr> <tr> <td>DATE</td> <td> </td> </tr> </table>		CONTRACTOR	CAPITAL SPRINKLER CONTRACTING, INC.	ADDRESS	6600 DORRIN ROAD COLUMBIA, MD 21046	PHONE	(410) 991-1234	FAX	(410) 991-2378	EMAIL		PROJECT	BALTIMORE RAVENS STADIUM AT CAMDEN YARDS	SHEET		DATE																					
CONTRACTOR	CAPITAL SPRINKLER CONTRACTING, INC.																																				
ADDRESS	6600 DORRIN ROAD COLUMBIA, MD 21046																																				
PHONE	(410) 991-1234																																				
FAX	(410) 991-2378																																				
EMAIL																																					
PROJECT	BALTIMORE RAVENS STADIUM AT CAMDEN YARDS																																				
SHEET																																					
DATE																																					

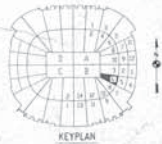




MIN. CLEARANCE OVER SPRINKLER HEADS SHALL BE MAINTAINED TO BE 13 FT 6 IN OVER THE TOP OF SPRINKLER HEADS. 4" MIN. CLEARANCE SHALL BE MAINTAINED OVER THE TOP OF SPRINKLER HEADS. SEE EBL DWG FP-101 FOR DETAILS OF THE HEAD TO BE MAINTAINED IN THE CASE OF SPRINKLER HEADS. SEE EBL DWG FP-101 FOR DETAILS.

REF. DWG 15
 SERVICE LEVEL
 SEE EBL DWG FP-101

AS-BUILT
 DATE: 8-17-98



RECORD OF TRADE COORDINATION	
DATE	SIGNATURE
SPRINKLER	CAPITOL SPRINKLER CONTRACTING, INC.
PLUMBER	POOLE & ROSE
ELECTRICIAN	EMERSON
MECHANICAL	POOLE & ROSE
CONTRACTOR	POOLE & ROSE

BALTIMORE RAVENS
 STADIUM AT CAMDEN YARDS, BALTIMORE, MD
 SERVICE LEVEL, QUAD B, SECTION 6
CAPITOL SPRINKLER CONTRACTING, INC.
 8600 DORRIN ROAD COLUMBIA MD 21046
 PHONE: 410-992-1294 FAX: 410-992-2008

CONTRACTING

 INC.

HYDRAULIC DESIGN DATA

DESIGNER	DESIGNER	DATE
CHECKED	CHECKED	DATE
APPROVED	APPROVED	DATE

SPRINKLER SCHEDULE & LEGEND

SPRINKLER	1/2" NPT	150#
PIPE	1/2" NPT	150#
VALVE	1/2" NPT	150#
HEAD	1/2" NPT	150#

CONTRACTOR: CAPITOL SPRINKLER CONTRACTING, INC.
 8600 DORRIN ROAD COLUMBIA MD 21046

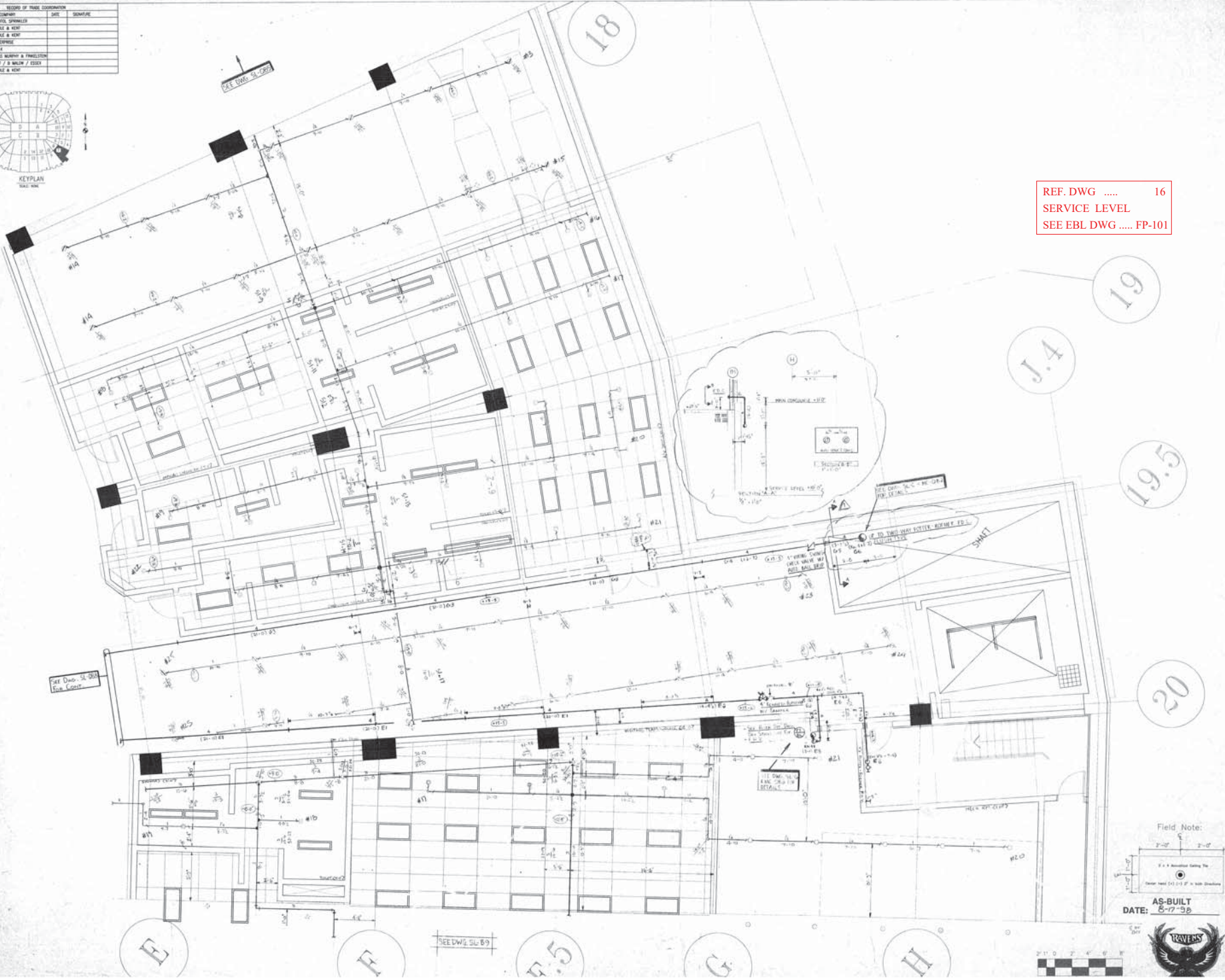
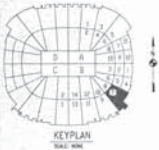
GENERAL NOTES:

- TO PREVENT FREEZING OF WATER IN PIPE SPRINKLER SYSTEM, OWNER TO PROVIDE HEATING SYSTEM TO MAINTAIN TEMPERATURE OF WATER IN PIPE SPRINKLER SYSTEM AT ALL TIMES.
- OWNER TO PROVIDE HEATING SYSTEM TO MAINTAIN TEMPERATURE OF WATER IN PIPE SPRINKLER SYSTEM AT ALL TIMES.

SCALE: 1/4" = 1'-0"

NORTH

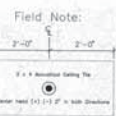
RECORD OF TRADE COORDINATION			
TRADE	CONTRACTOR	DATE	REMARKS
SPRINKLER	CAPITOL SPRINKLER		
PLUMBER	POZZI & NEFF		
ELECTRICIAN	ENTERPRISE		
MECHANICAL	W-T / B WALSH / ESSER		
MECHANICAL	POZZI & NEFF		



REF. DWG 16
 SERVICE LEVEL
 SEE EBL DWG FP-101

19.5

20



AS-BUILT
 DATE: 8-17-98

BALTIMORE RAVENS 6600 EASTERN AVENUE, SUITE 100 BALTIMORE, MD 21206 TEL: 410-326-7000 FAX: 410-326-7001	
CAPITOL SPRINKLER CONTRACTING INC. 6500 EASTERN AVENUE, SUITE 100 BALTIMORE, MD 21206 TEL: 410-326-7000 FAX: 410-326-7001	
CONTRACTOR: CAPITOL SPRINKLER CONTRACTING INC. 6500 EASTERN AVENUE, SUITE 100 BALTIMORE, MD 21206 TEL: 410-326-7000 FAX: 410-326-7001	
SPRINKLER SCHEDULE & LEGEND 1. Sprinkler Head: Standard, 1/2" K 2. Sprinkler Head: Standard, 1/2" K, 157°F 3. Sprinkler Head: Standard, 1/2" K, 157°F, 157°F 4. Sprinkler Head: Standard, 1/2" K, 157°F, 157°F, 157°F	
IMPORTANT: TO AVOID THE RISK OF DAMAGE TO THE SPRINKLER SYSTEM, THE CONTRACTOR SHALL VERIFY THE LOCATION OF ALL SPRINKLER HEADS AND SHALL NOTIFY THE ARCHITECT IMMEDIATELY IN WRITING IF ANY DISCREPANCIES ARE FOUND.	



NORTH

DESIGNER: D. FLEGER / T. BARRHAM
 SCALE: 1/4" = 1'-0"
 CHECK BY: [Signature]
 DATE: 06-16-97

SCV FOR S1 &
SCV FOR S2



Field Note:

2' 0" 2' 0" 4' 0" 6' 0" 8' 0"

SCALE: 1/4" = 1'-0"

RECORD OF REVISIONS				
NO.	DATE	BY	DESCRIPTION	APPROVED



REF. DWG 18
SERVICE LEVEL
SEE EBL DWG FP-101

AS-BUILT
DATE: 6-17-98

BALTIMORE RAVENS STADIUM AT CARMER YARDS, BALTIMORE, MD SERVICE LEVEL, QUAD B, SECTION 10 CAPITOL SPRINKLER CONTRACTING, INC. 1000 SOUTH BROAD STREET BALTIMORE, MD 21202-1000	
NORTH SECTION D, FLOOR 77, PARKWAY SCALE: 1/4" = 1'-0"	
DRAWN BY: FILE NUMBER: 0862 APPROVAL: SL-0B10 DATE: 06-18-97	CONTRACTOR'S DESIGN DATA CALCULATION 1 CALCULATION 2 CALCULATION 3 CALCULATION 4 CALCULATION 5 CALCULATION 6 CALCULATION 7 CALCULATION 8 CALCULATION 9 CALCULATION 10 CALCULATION 11 CALCULATION 12 CALCULATION 13 CALCULATION 14 CALCULATION 15 CALCULATION 16 CALCULATION 17 CALCULATION 18 CALCULATION 19 CALCULATION 20 CALCULATION 21 CALCULATION 22 CALCULATION 23 CALCULATION 24 CALCULATION 25 CALCULATION 26 CALCULATION 27 CALCULATION 28 CALCULATION 29 CALCULATION 30 CALCULATION 31 CALCULATION 32 CALCULATION 33 CALCULATION 34 CALCULATION 35 CALCULATION 36 CALCULATION 37 CALCULATION 38 CALCULATION 39 CALCULATION 40 CALCULATION 41 CALCULATION 42 CALCULATION 43 CALCULATION 44 CALCULATION 45 CALCULATION 46 CALCULATION 47 CALCULATION 48 CALCULATION 49 CALCULATION 50 CALCULATION 51 CALCULATION 52 CALCULATION 53 CALCULATION 54 CALCULATION 55 CALCULATION 56 CALCULATION 57 CALCULATION 58 CALCULATION 59 CALCULATION 60 CALCULATION 61 CALCULATION 62 CALCULATION 63 CALCULATION 64 CALCULATION 65 CALCULATION 66 CALCULATION 67 CALCULATION 68 CALCULATION 69 CALCULATION 70 CALCULATION 71 CALCULATION 72 CALCULATION 73 CALCULATION 74 CALCULATION 75 CALCULATION 76 CALCULATION 77 CALCULATION 78 CALCULATION 79 CALCULATION 80 CALCULATION 81 CALCULATION 82 CALCULATION 83 CALCULATION 84 CALCULATION 85 CALCULATION 86 CALCULATION 87 CALCULATION 88 CALCULATION 89 CALCULATION 90 CALCULATION 91 CALCULATION 92 CALCULATION 93 CALCULATION 94 CALCULATION 95 CALCULATION 96 CALCULATION 97 CALCULATION 98 CALCULATION 99 CALCULATION 100



REF. DWG 19
 SERVICE LEVEL
 SEE EBL DWG FP-101

23

24

24.1

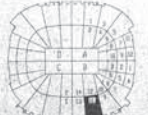
24.5

16

25

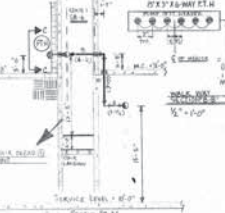
AS-BUILT
 DATE: 8-17-98

SCALE: 3/8" = 1'-0"



NEW LOCATIONS FOR NEW SIGNAL EQUIPMENT TO BE PLACED AT 15' FROM THE WALL TO CLEAR 120" MIN. CLEARANCE TO WALL. SEE SHEET FOR DETAILS. 120" MIN. CLEARANCE TO WALL. 120" MIN. CLEARANCE TO WALL. 120" MIN. CLEARANCE TO WALL.



LISTED BY T. FREEMAN AUG-20-1997



SPRINKLER SCHEDULE & LEGEND
 A-1922 W/F/L
 A-1924 W/F/L
 A-1928 W/F/L
 A-1930 W/F/L



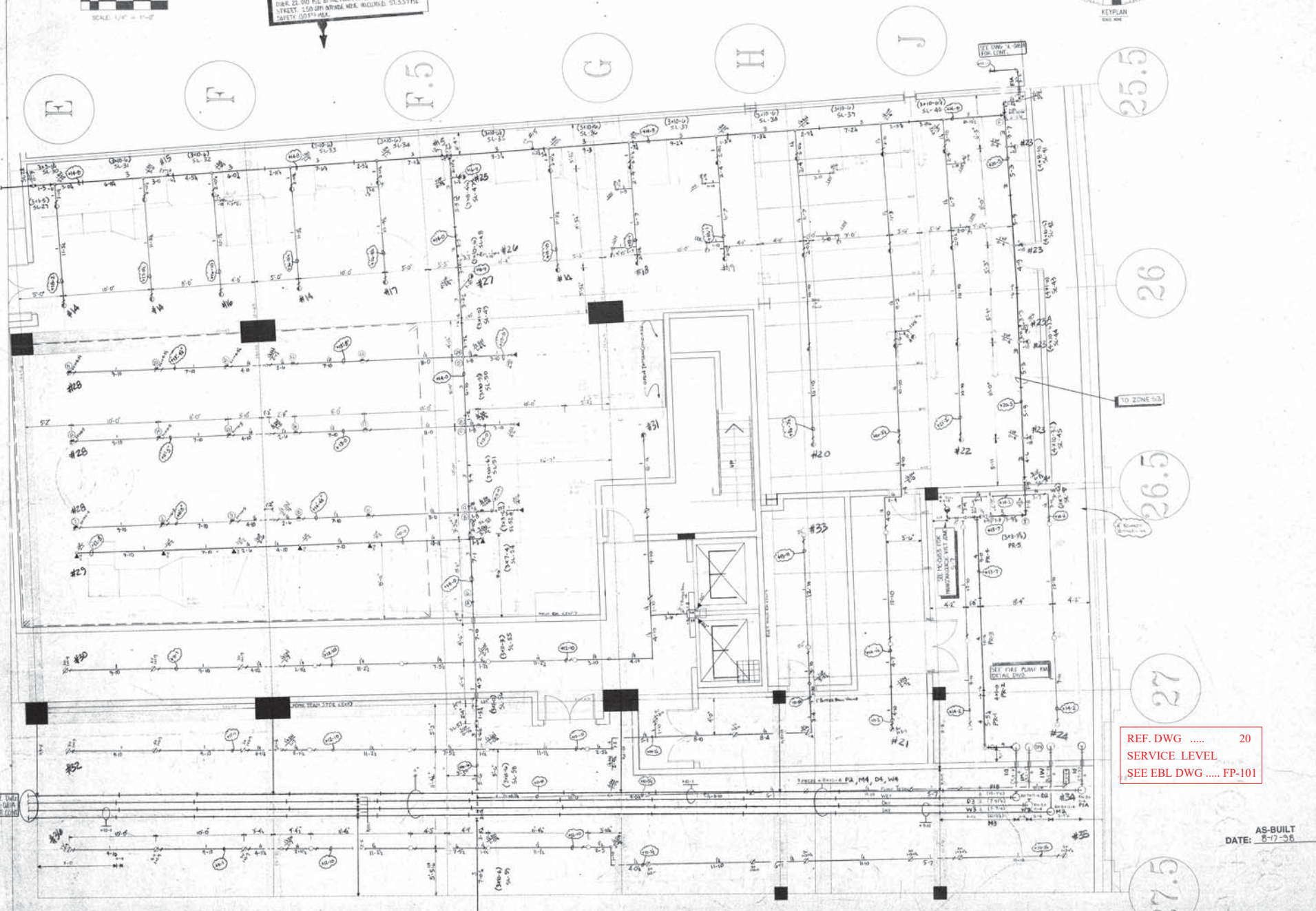
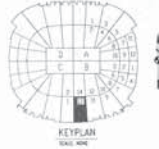
RISER NPP.

CONTRACTOR: SPRINKLER CONTRACTING, INC. 8500 CORBIN ROAD, COLUMBIA, MD 21045 (410) 726-1100	SHEET NO.: 1000 OF 1000 DATE: 8-17-98 SCALE: 1/4" = 1'-0"
DRAWN BY: J. M. GARDNER CHECKED BY: T. FREEMAN APPROVED BY: T. FREEMAN	DESIGNER: D. FLORES SCALE: 1/4" = 1'-0"
PROJECT NO.: 98-1111	DATE: 08-18-98
BALTIMORE RAVENS 8500 CORBIN ROAD, COLUMBIA, MD 21045 (410) 726-1100 CAPITOL SPRINKLER CONTRACTING, INC. 8500 CORBIN ROAD, COLUMBIA, MD 21045 (410) 726-1100	
CONTRACTING  INC.	
NORTH 	

RECORD OF TRADE COORDINATION			
TRADE	COMMENT	DATE	REMARKS
SPRINKLER	CAPROL SPRINKLER		
PLUMBER	PIPE & HANG		
ELECTRICAL	PIPE & HANG		
MECH	PIPE & HANG		
MECHANICAL	PIPE & HANG / EXHAUST		



NEW PLUMBING ON HAS BEEN DESIGNED TO PROVIDE 2 GPM FTY OVER 1000 FTY SYSTEM SUPPLIED. MAXIMUM CLEAR 22.90 FTY AT THE POINT OF CONNECTION TO THE STREET. 150-010 MINIMUM WIDE, INCLUDING 51.531 FTY SAFETY 00571-103.



REF. DWG 20
 SERVICE LEVEL
 SEE EBL DWG FP-101

AS-BUILT
 DATE: 8-17-06

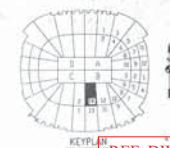
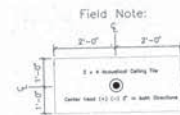
BALTIMORE RAVENS
 STADIUM AT CAMDEN YARDS, BALTIMORE, MD

CAPITOL SPRINKLER CONTRACTING, INC.
 6550 DORRIN ROAD, COLUMBIA, MD 21046

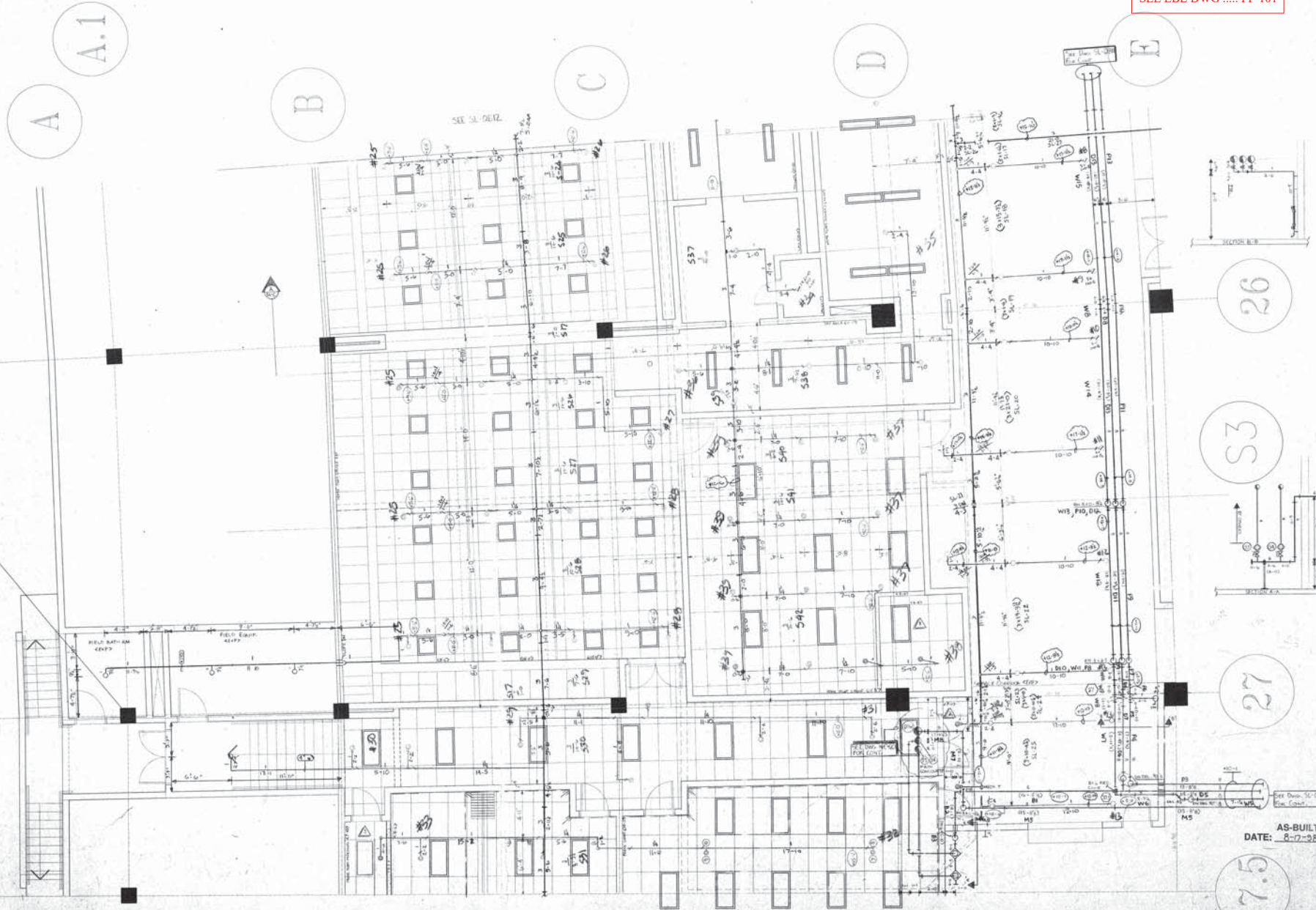
DESIGNER: D. FLOOR/PT. PARIHAR
 SCALE: 1/4" = 1'-0"
 CHECK BY: _____
 FILE NUMBER: 0803
 APPROVAL: _____
 DATE: 06-19-07

PROJECT: BALTIMORE RAVENS STADIUM AT CAMDEN YARDS, BALTIMORE, MD
 DRAWING: SERVICE LEVEL
 SHEET: SL-QB13
 TOTAL SHEETS: 13

RECORD OF TRADE COORDINATION			
TRADE	COMPANY	DATE	DESCRIPTION
SPRINKLER	CAPITAL SPRINKLER		
PLUMBER	PKD & WHT		
PAINT WORK	PKD & WHT		
ELECTRICAL	ENTERPRISE		
Mech	M.E.		
IRONWORK	PKD & WHT / PROTECTION		
CONC	M-T / B WALK / EXIST		
MECHANICAL	PKD & WHT		



REF. DWG 21
 SERVICE LEVEL
 SEE EBL DWG FP-101



BALTIMORE RAVENS
 STADIUM AT CAMDEN YARDS, BALTIMORE, MD
 SERVICE LEVEL, QUAD B, SECTION 14
 CAPITAL SPRINKLER CONTRACTING INC.

1000 DOMINION ROAD, COLUMBIA, MD 21046
 PHONE: (410) 326-1000
 FAX: (410) 326-1001

DESIGNED BY: D. FLORENZ / PARRHAM
 SCALE: 1/4" = 1'-0"
 CHECKED BY: [Signature]
 FILE NUMBER: [Blank]
 APPROVAL: [Signature]
 DATE: 09-18-97

AS-BUILT DATE: 8-17-98

SPRINKLER SCHEDULE & LEGEND

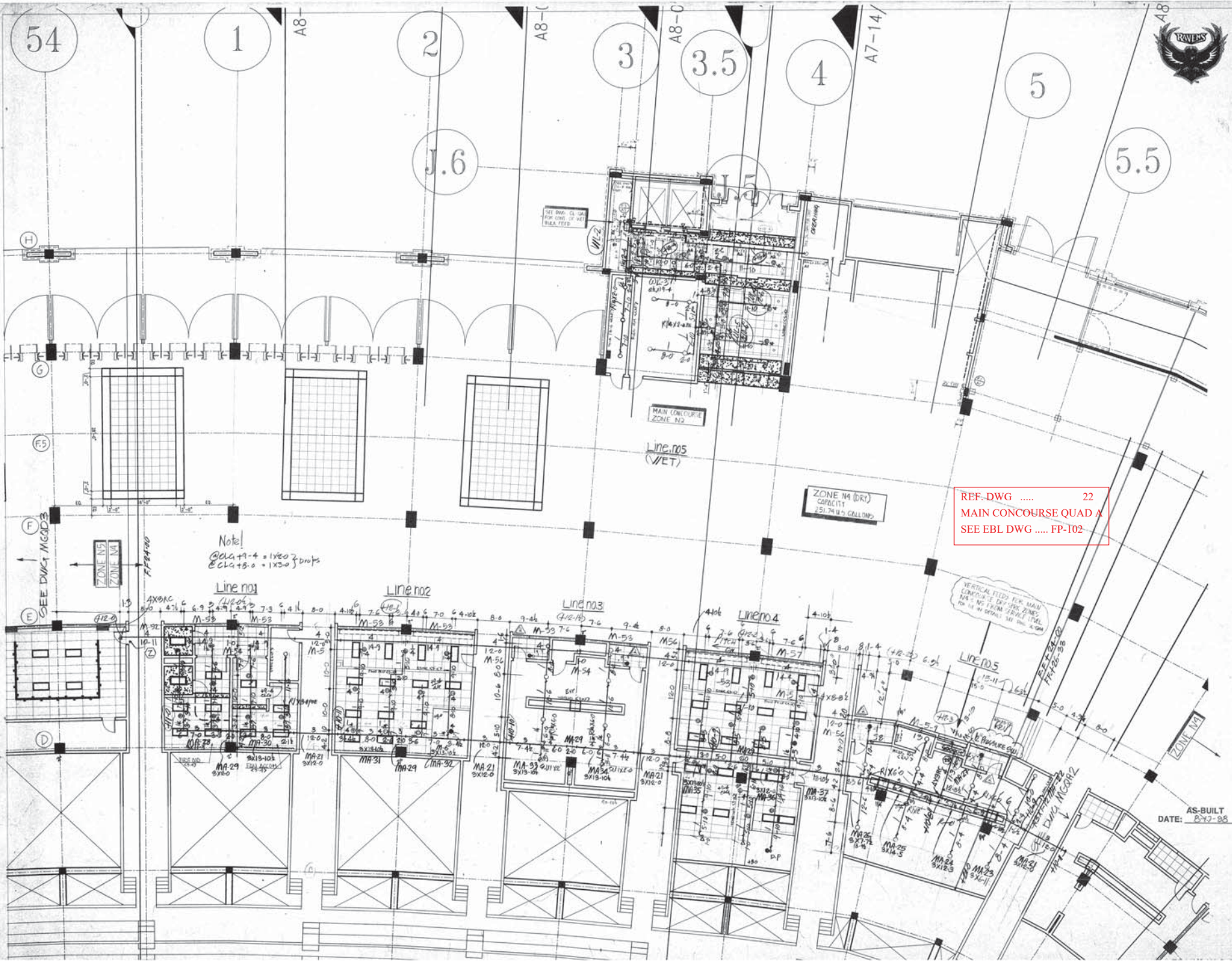
SYMBOL	DESCRIPTION
(Symbol)	Standard Sprinkler
(Symbol)	Special Sprinkler
(Symbol)	... (Additional symbols and descriptions)

CONTRACTOR: CAPITAL SPRINKLER CONTRACTING, INC.
 6550 DOMINION ROAD, COLUMBIA, MD 21046
 PHONE: (410) 326-1000
 FAX: (410) 326-1001

GENERAL NOTES:
 1. VERIFY PRESENCE OF IMPORTANT AREA SPRINKLER SPACING...
 2. VERIFY PRESENCE OF IMPORTANT AREA SPRINKLER SPACING...
 3. VERIFY PRESENCE OF IMPORTANT AREA SPRINKLER SPACING...
 4. VERIFY PRESENCE OF IMPORTANT AREA SPRINKLER SPACING...
 5. VERIFY PRESENCE OF IMPORTANT AREA SPRINKLER SPACING...

HYDRAULIC DESIGN DATA

LOCATION	1. FLOW	2. VELOCITY	3. PRESSURE
...



REF-DWG 22
 MAIN CONCOURSE QUAD A
 SEE EBL DWG FP-102

Note!
 BOLTS 1/2" x 4" = 1x200
 BOLTS 1/2" x 6" = 1x200

AS-BUILT
 DATE: 02-27-08



DRAWING REVISION DATA	
NO.	DATE
1	02/27/08
2	02/27/08
3	02/27/08
4	02/27/08
5	02/27/08
6	02/27/08
7	02/27/08
8	02/27/08
9	02/27/08
10	02/27/08

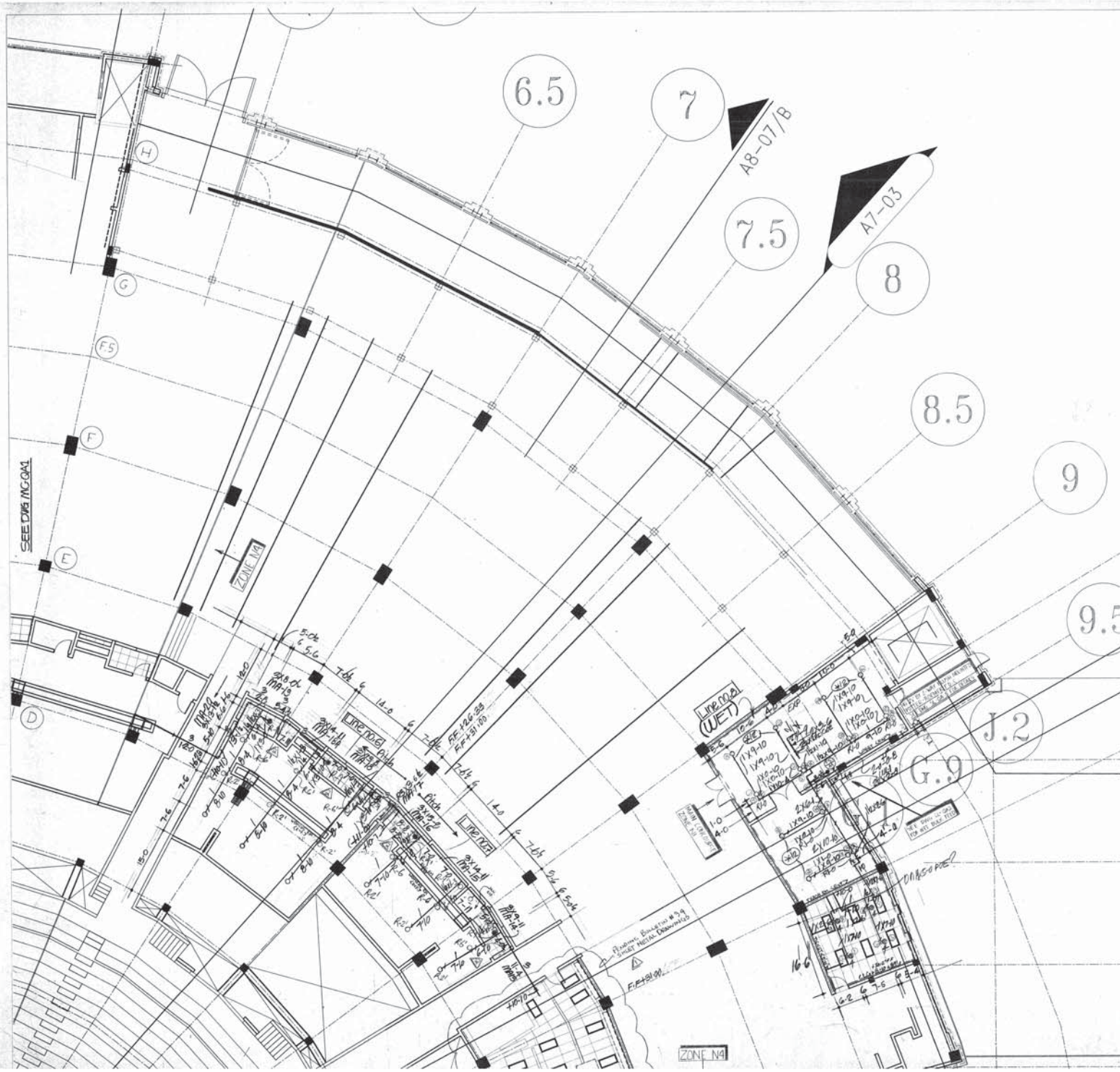
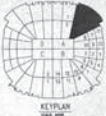
CONTRACTOR: CAPITOL SPRINKLER CONTRACTING, INC.	
ADDRESS	6500 SOUTH BAY COLUMBIA MD 21046
PHONE	410-276-1100
FAX	410-276-1101
EMAIL	SALES@CAPITOLSPRINKLER.COM
WEBSITE	WWW.CAPITOLSPRINKLER.COM

SPRINKLER SCHEDULE & LEGEND	
SPRINKLER	1/2" K-16.2
VALVE	1/2" K-16.2
DRY PIPE	1/2" K-16.2
WET PIPE	1/2" K-16.2
DELUGE	1/2" K-16.2
WATER	1/2" K-16.2
FOAM	1/2" K-16.2
WATER	1/2" K-16.2
FOAM	1/2" K-16.2



BALTIMORE RAVENS
 MAIN CONCOURSE
 CAPITOL SPRINKLER
 CONTRACTING, INC.
 6500 SOUTH BAY COLUMBIA, MD 21046
 410-276-1100

NORTH	
DESIGNER	PLC/EC
SCALE	1/4" = 1'-0"
CHECK BY	SCALE
DATE	DATE



SEE DWG MCG01

ZONE N4

ZONE N4

REVISIONS
MAIN CONCOURSE LOBBY was Reel Detector
to Remove -1 GFTT from Top Floor Recessed 1500mm²
Detector Revisions 2007 05 09
See EBL DWG MCG01 for
Top Floor of Concourse Tower Section 02 GFTT Note
Revisions: 07 03 31 PM Service2 Plan Document
020111 Plan (Revised)

REF. DWG 23
MAIN CONCOURSE QUAD A
SEE EBL DWG FP-102

AS-BUILT
DATE: 8-17-08

REVISIONS

NO.	DATE	DESCRIPTION
1	08/17/08	AS-BUILT

CONTRACTOR: CAPITOL SPRINKLER CONTRACTING, INC.
6550 DORRIS ROAD COLUMBIA, MD 21046

NO.	DATE	DESCRIPTION
1	08/17/08	AS-BUILT

SPRINKLER SCHEDULE & LEGEND

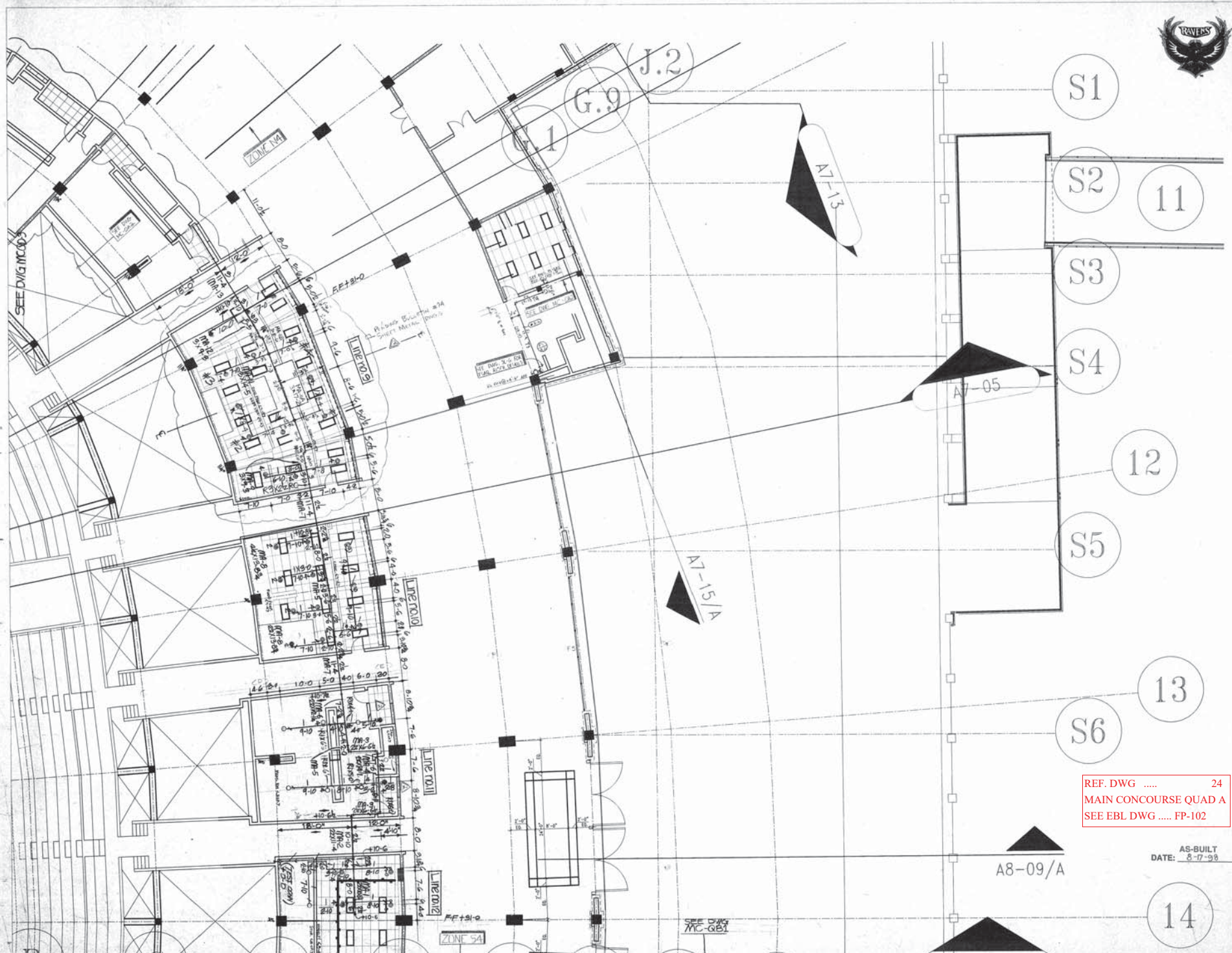
SYMBOL	DESCRIPTION
(Symbol)	SPRINKLER HEAD
(Symbol)	WET PIPE VALVE
(Symbol)	DRY PIPE VALVE
(Symbol)	DELUGE VALVE
(Symbol)	WET PIPE RISER VALVE
(Symbol)	DRY PIPE RISER VALVE
(Symbol)	DELUGE RISER VALVE
(Symbol)	WET PIPE MAIN
(Symbol)	DRY PIPE MAIN
(Symbol)	DELUGE MAIN
(Symbol)	WET PIPE BRANCH
(Symbol)	DRY PIPE BRANCH
(Symbol)	DELUGE BRANCH
(Symbol)	WET PIPE HANG OFF
(Symbol)	DRY PIPE HANG OFF
(Symbol)	DELUGE HANG OFF



BALTIMORE RAVENS
THOMAS & CAHILL WOODS BOWLING, MD
MAIN CONCOURSE
CAPITOL SPRINKLER CONTRACTING, INC.
6550 DORRIS ROAD COLUMBIA, MARYLAND 21046
301-980-1033

NORTH

DESIGNER	SCALE
DRG	1/4" = 1'-0"



REF. DWG 24
 MAIN CONCOURSE QUAD A
 SEE EBL DWG FP-102

AS-BUILT
 DATE: 8-17-98

REVISION DATA	
NO.	DATE

CONTRACTOR: CAPITAL SPRINKLER CONTRACTING, INC.	
DESCRIPTION	DATE

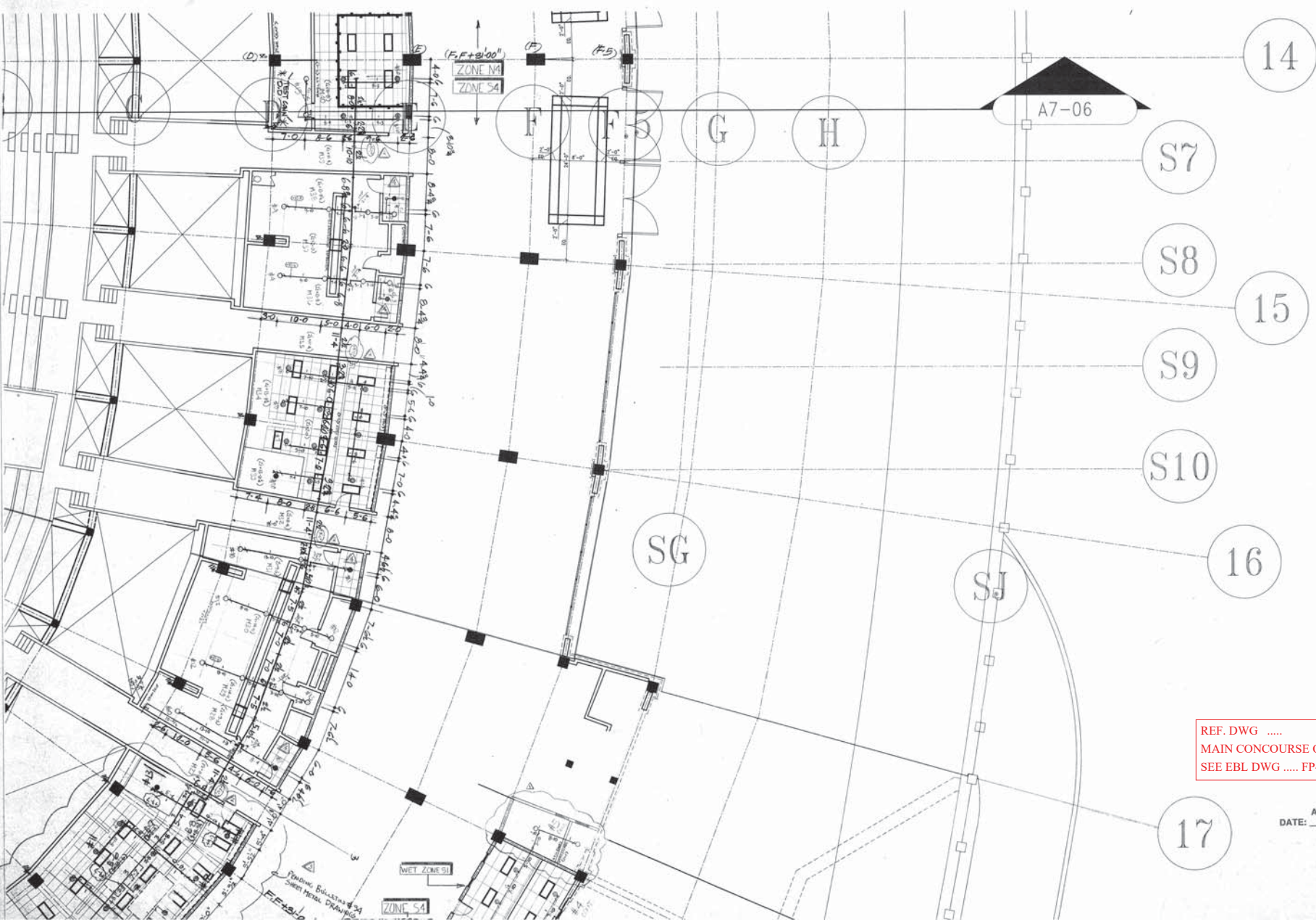
OWNER: SCHUBERT & LEON	
NAME	DATE



BALTIMORE RAVENS
 MAIN CONCOURSE
 CAPITAL SPRINKLER CONTRACTING, INC.
 8500 DODD ROAD, COLUMBIA, MARYLAND 21046
 301-983-1033

NORTH	
DESIGNER	DATE

See DWG MCGAB



DESCRIPTION	DATE	BY	CHECKED
DESIGN			
CHECK			
APPROVAL			

CONTRACTOR: CAPITAL SPRINKLER CONTRACTING, INC.
 6505 DORR ROAD, COCKEYVILLE, MD 21035
 410-487-7000
 www.capital-sprinkler.com

DESIGNER: BSA
CHECKER: BSA
DATE: 12-10-13

REVISION	DATE	DESCRIPTION
1		
2		

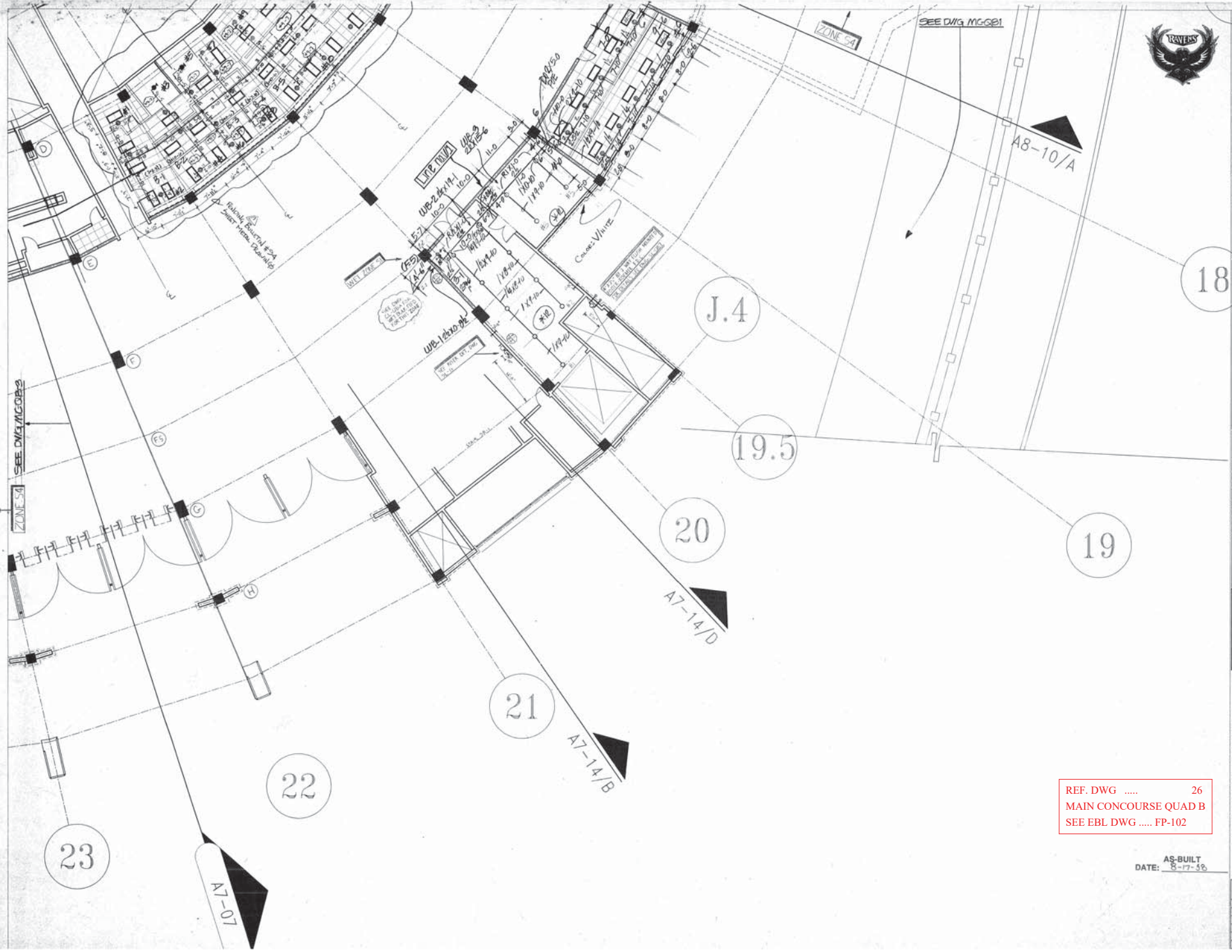


BALTIMORE RAVENS
 STADIUM RECONSTRUCTION
 MAIN CONCOURSE
CAPITAL SPRINKLER CONTRACTING, INC.
 6505 DORR ROAD COCKEYVILLE, MARYLAND 21035
 410-487-7000

REF. DWG 25
 MAIN CONCOURSE QUAD B
 SEE EBL DWG FP-102

AS-BUILT
 DATE: 8-7-28

DESIGNER	REVISION	SCALE
BSA		1/8" = 1'-0"



HYDRAULIC DESIGN DATA	
DESIGNER	DATE
CHECKED	DATE
APPROVED	DATE
CONTRACTOR: CAPITOL SPRINKLER CONTRACTING, INC.	
6552 EGGERS ROAD, SUITE 2100, BETHESDA, MD 20814	
TEL: 301-987-1123 FAX: 301-987-1123	
PROJECT: BALTIMORE RAVENS STADIUM	
DRAWING: MAIN CONCOURSE QUAD B	
DATE: 8-17-06	

SPRINKLER SCHEDULE & LEGEND	
1. Sprinkler	Standard
2. Sprinkler	Standard
3. Sprinkler	Standard
4. Sprinkler	Standard
5. Sprinkler	Standard
6. Sprinkler	Standard
7. Sprinkler	Standard
8. Sprinkler	Standard
9. Sprinkler	Standard
10. Sprinkler	Standard
11. Sprinkler	Standard
12. Sprinkler	Standard
13. Sprinkler	Standard
14. Sprinkler	Standard
15. Sprinkler	Standard
16. Sprinkler	Standard
17. Sprinkler	Standard
18. Sprinkler	Standard
19. Sprinkler	Standard
20. Sprinkler	Standard
21. Sprinkler	Standard
22. Sprinkler	Standard
23. Sprinkler	Standard

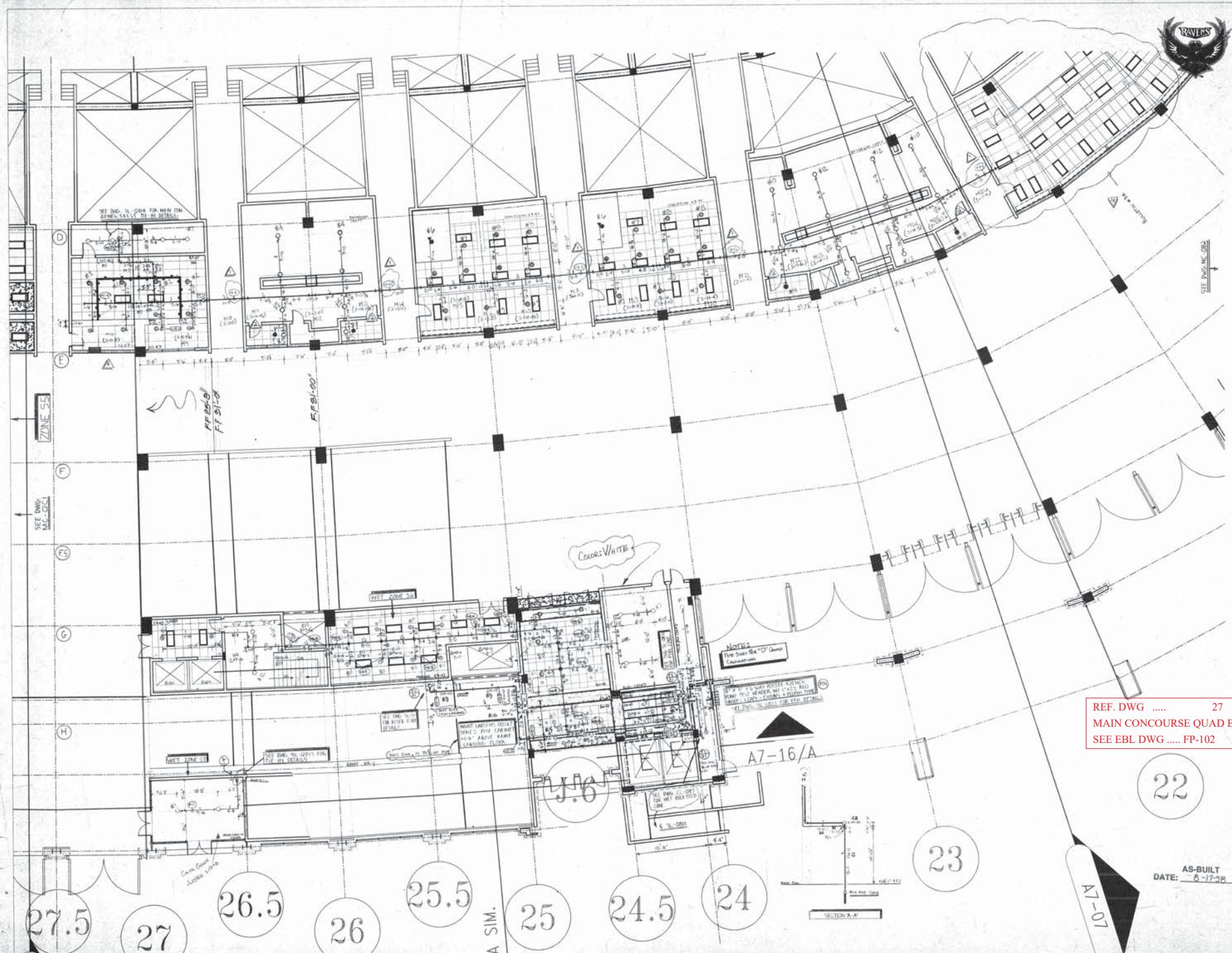


BALTIMORE RAVENS
 STADIUM AT CAMDEN YARDS, BALTIMORE, MD
MAIN CONCOURSE
CAPITOL SPRINKLER CONTRACTING, INC.
 6552 EGGERS ROAD, SUITE 2100, BETHESDA, MD 20814
 301-987-1123

REF. DWG 26
 MAIN CONCOURSE QUAD B
 SEE EBL DWG FP-102

AS-BUILT
 DATE: 8-17-06

DESIGNER		DESIGNER	
SCALE	1/8" = 1'-0"	SCALE	
CHECK BY		CHECKED BY	
FILE NUMBER	8-2	FILE NUMBER	
APPROVAL		APPROVAL	
DATE	12-18-12	DATE	



REF. DWG 27
 MAIN CONCOURSE QUAD B
 SEE EBL DWG FP-102

22

23

27.5

27

26.5

26

25.5


25


24.5

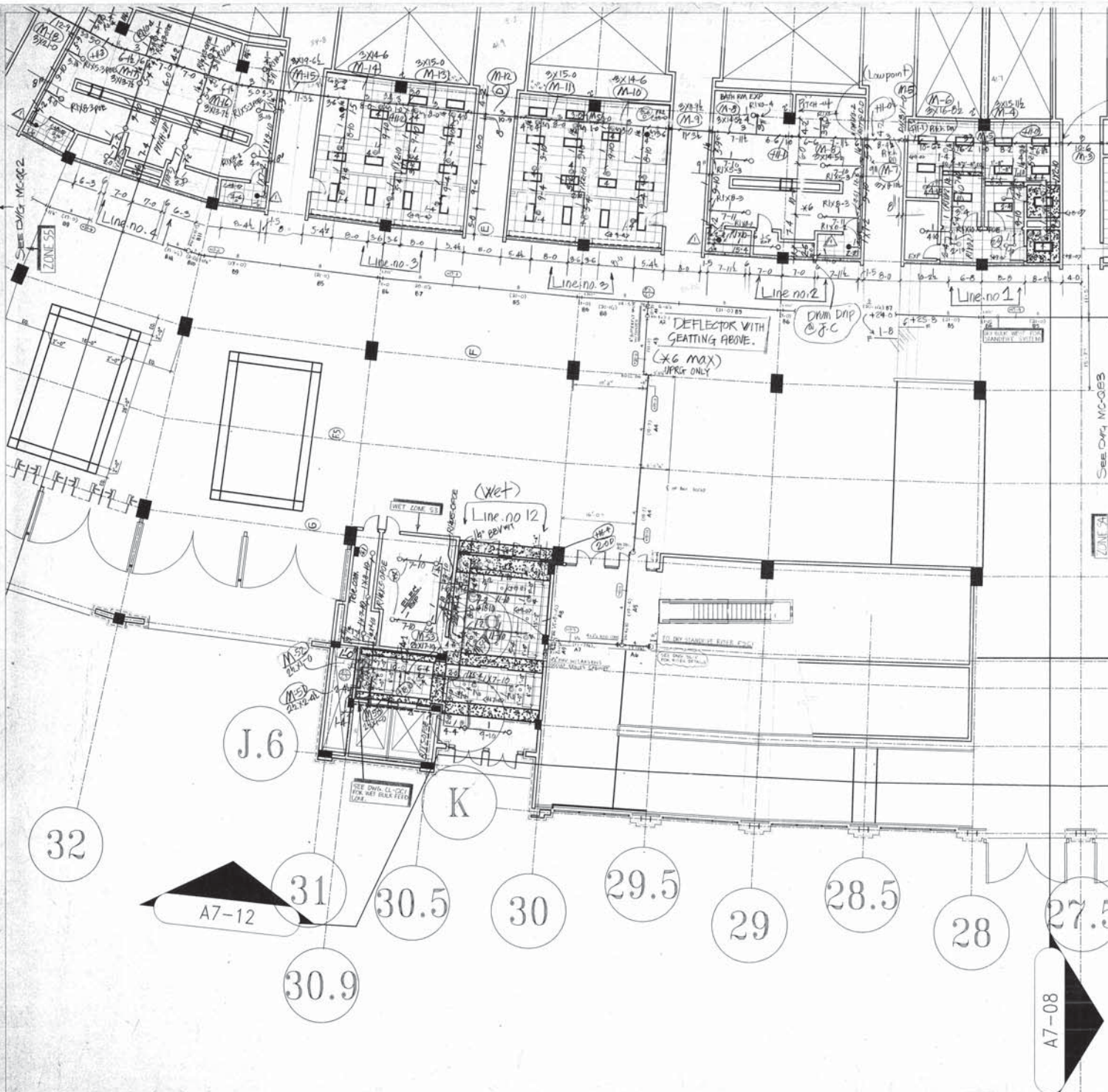
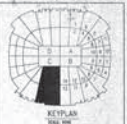
24

A7-01

AS-BUILT
 DATE: 8-17-98



 NORTH	
BALTIMORE RAVENS STADIUM AT CAMDEN WING BUILDING, MC MAIN CONCOURSE CAPITOL SPRINKLER CONTRACTING, INC. <small>1800 DORRIN ROAD DODDSDALE, MARYLAND 21028 301-982-1022</small>	CONTRACTOR CONTRACTOR: CAPITOL SPRINKLER CONTRACTING, INC. 6500 DORRIN ROAD, COLUMBIA, MD 21046 PHONE: 301-982-1022 FAX: 301-982-1023 E-MAIL: SALES@CAPITOLSPRINKLER.COM WWW: WWW.CAPITOLSPRINKLER.COM PROJECT NO.: 98-01 DRAWING NO.: 22 DATE: 8-17-98 SCALE: 1/8" = 1'-0" SHEET NO.: 22 OF 22 TOTAL SHEETS: 22



TYPICAL SLEEVE
4 X 0-8" PBE

SEE DWG. 54-001
FOR TYPICAL
MAIN CONCOURSE DRY PND
AS SHOWN IN DETAILS

RISER NIPPLE @ DRY PND
1 X 0-2 TYPICAL AR-DV 1X0-4
AT TEE CONST.
DEFLECTOR 1" BELOW
STEAM

DEFLECTOR WITH
SEATING ABOVE.
(XG MAX)
UPRIF ONLY

DMM DNP
@ 8-C

SEE DWG. MC-025

(CENTER OF TILE)
1 X 1C 20 X 2-0 TILE
2 X 1C 20 X 4-0 TILE

ZONE 55 DRY
CAPACITY
264.55 US GALLONS

REF. DWG 28
MAIN CONCOURSE QUAD C
SEE EBL DWG FP-102

AS-BUILT
DATE: 8-17-35

CONTRACTOR: CAPITAL SPRINKLER CONTRACTING, INC.	
DATE	8-17-35
PROJECT	BALTIMORE RAVENS STADIUM AT CANTON MANSION, BALTIMORE, MD.
OWNER	BALTIMORE RAVENS
DESIGNER	DMAC
CHECKER	DMAC
FILE NUMBER	8-67
APPROVAL	
DATE	12-10-73

SPRINKLER SCHEDULE & LEGEND	
1	1" X 1" C 20 X 2-0 TILE
2	2" X 1" C 20 X 4-0 TILE
3	1" X 1" C 20 X 2-0 TILE
4	2" X 1" C 20 X 4-0 TILE
5	1" X 1" C 20 X 2-0 TILE
6	2" X 1" C 20 X 4-0 TILE
7	1" X 1" C 20 X 2-0 TILE
8	2" X 1" C 20 X 4-0 TILE
9	1" X 1" C 20 X 2-0 TILE
10	2" X 1" C 20 X 4-0 TILE



BALTIMORE RAVENS
STADIUM AT CANTON MANSION, BALTIMORE, MD.
MAIN CONCOURSE
CAPITAL SPRINKLER
CONTRACTING, INC.
6000 TERMINI BLVD., BALTIMORE, MD. 21208
TEL: 410-746-2400
FAX: 410-746-2401

NORTH
DESIGNER: DMAC
SCALE: 1/8" = 1'-0"
CHECKER: DMAC
FILE NUMBER: 8-67
APPROVAL: [Signature]
DATE: 12-10-73



HYDRAULIC DESIGN DATA	
DESIGNER	DATE
CHECKED BY	DATE
APPROVED BY	DATE
PROJECT	DESCRIPTION
CONTRACTOR	PROJECT NO.
DATE	SCALE

SPRINKLER SCHEDULE & LEGEND	
SPRINKLER	DESCRIPTION
VALVE	DESCRIPTION
PIPE	DESCRIPTION
CONNECTION	DESCRIPTION
WET PIPING	DESCRIPTION
DRY PIPING	DESCRIPTION
WET PIPING	DESCRIPTION
DRY PIPING	DESCRIPTION
WET PIPING	DESCRIPTION
DRY PIPING	DESCRIPTION



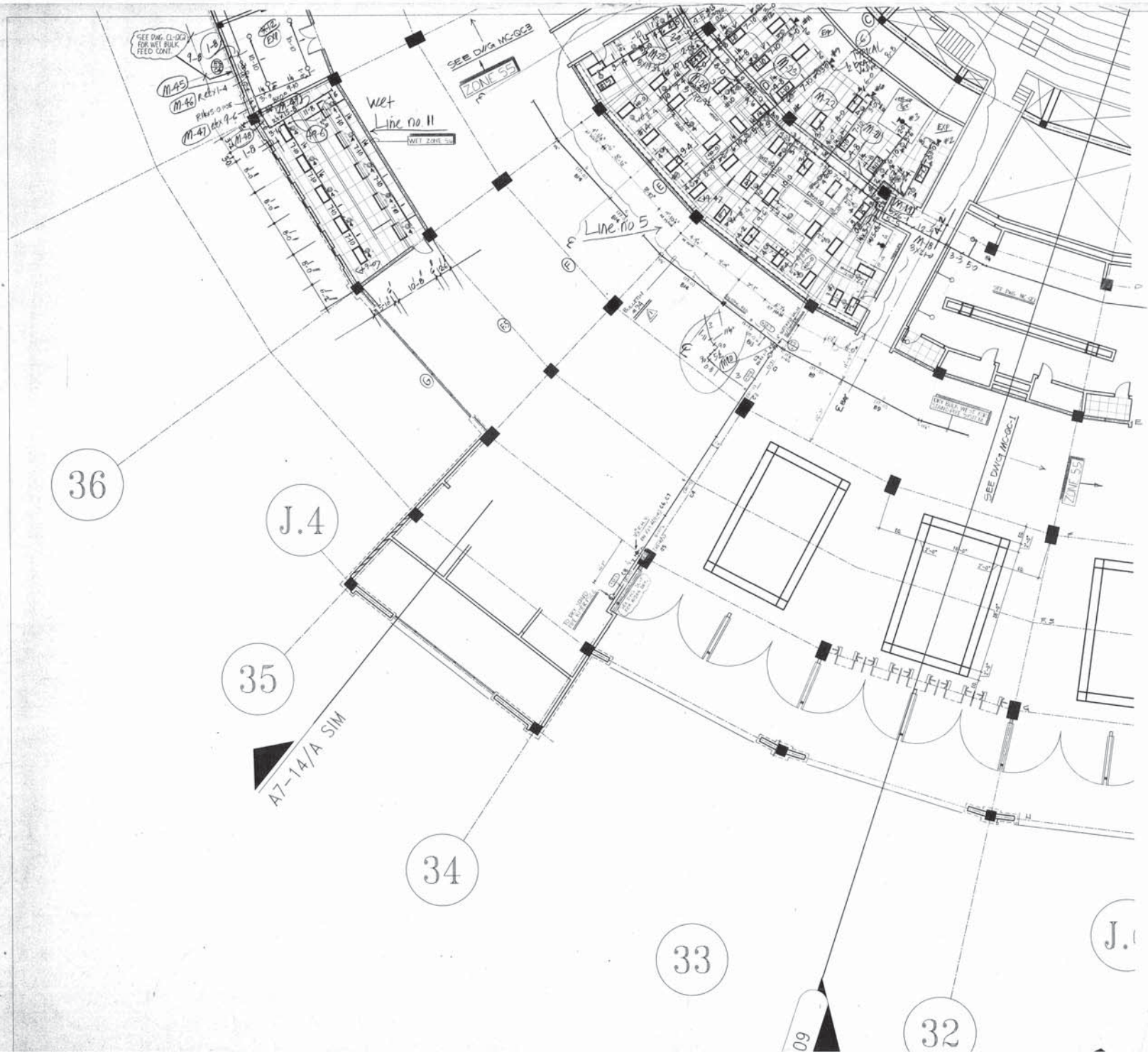
BALTIMORE RAVENS
 STADIUM AT CAMDEN SQUARE BALTIMORE, MD
MAIN CONCOURSE
CAPITOL SPRINKLER CONTRACTING, INC.
 1000 WOODBINE ROAD COLLETTA PARK, MD 21046-1000
 TEL: 410-326-1000 FAX: 410-326-1001

NORTH	
DESIGNED BY	DATE
CHECKED BY	DATE
APPROVED BY	DATE
PROJECT NO.	SCALE
FILE NUMBER	CHECKED BY
DATE	APPROVAL
DATE	DATE

REF. DWG 29
 MAIN CONCOURSE QUAD C
 SEE EBL DWG FP-102

SEE DWG MG-QC1
 FOR NOTES.

AS-BUILT
 DATE: 8-17-88



41

40

39

38

37

D

C

A7-15/C

Line no. 10

SEE DWG MC-Q01

ZONE N5

SEE DWG MC-QC2 FOR THIS AREA

ZONE S5



PROJECT NAME	CONTRACTOR	DATE
CONTRACT NO.	PROJECT NO.	ISSUE NO.
OWNER	DESIGNER	SCALE
DATE	PROJECT NO.	DATE
DATE	PROJECT NO.	DATE
DATE	PROJECT NO.	DATE

CONTRACTOR: CAPITOL SPRINKLER CONTRACTING, INC.
 6500 ROCKHILL ROAD, BALTIMORE, MD 21245
 PHONE: 410-521-1111
 FAX: 410-521-1112
 WWW: WWW.CAPITOLSPRINKLER.COM

NO.	DATE	DESCRIPTION
1	12-10-12	ISSUED FOR BIDDING
2	12-10-12	ISSUED FOR BIDDING
3	12-10-12	ISSUED FOR BIDDING
4	12-10-12	ISSUED FOR BIDDING
5	12-10-12	ISSUED FOR BIDDING
6	12-10-12	ISSUED FOR BIDDING
7	12-10-12	ISSUED FOR BIDDING
8	12-10-12	ISSUED FOR BIDDING
9	12-10-12	ISSUED FOR BIDDING
10	12-10-12	ISSUED FOR BIDDING



BALTIMORE RAVENS
 STADIUM AT CAMDEN YARD, BALTIMORE, MD
 MAIN CONCOURSE
 CAPITOL SPRINKLER CONTRACTING, INC.
 3317 MARLBOROUGH DRIVE, BALTIMORE, MD 21215
 410-521-1111

REF. DWG 30
 MAIN CONCOURSE QUAD C
 SEE EBL DWG FP-102

AS-BUILT
 DATE: 8-17-38

DESIGNED BY	DATE	SCALE
CHECKED BY	DATE	SCALE
FILE NUMBER	FILE NAME	DATE
APPROVED	APPROVAL	DATE



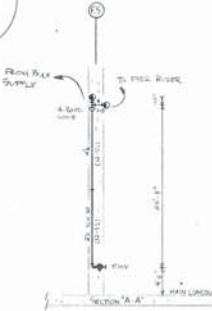
45

44

43

42

41



A7-10



SEE DWG MCG02

PENDING BULLETIN FOR SHEET METAL DRAWINGS

ZONE 5 (DRY)
CAPACITY
252 TB GALLONS

REF. DWG 31
MAIN CONCOURSE QUAD D
SEE EBL DWG FP-102

AS-BUILT
DATE: 8-17-98



HYDRAULIC DESIGN DATA	
DESIGNER	PROJECT
CHECKER	DATE
REVISIONS	
NO.	DATE
1	10-13-98
2	11-17-98
3	1-27-99
4	4-28-99
5	6-11-99
6	7-13-99
7	8-17-99
8	9-17-99
9	10-17-99
10	11-17-99
11	12-17-99
12	1-17-00
13	2-17-00
14	3-17-00
15	4-17-00
16	5-17-00
17	6-17-00
18	7-17-00
19	8-17-00
20	9-17-00
21	10-17-00
22	11-17-00
23	12-17-00

CONTRACTOR: CAPITOL SPRINKLER CONTRACTING, INC.
 FIRE PROTECTION
 4825 CONSUMM ROAD SUITE 1020
 ANNAPOLIS, MD 21403
 (410) 293-9900
 (410) 293-9901
 FAX (410) 293-9902
 WWW.CAPITOLSPRINKLER.COM

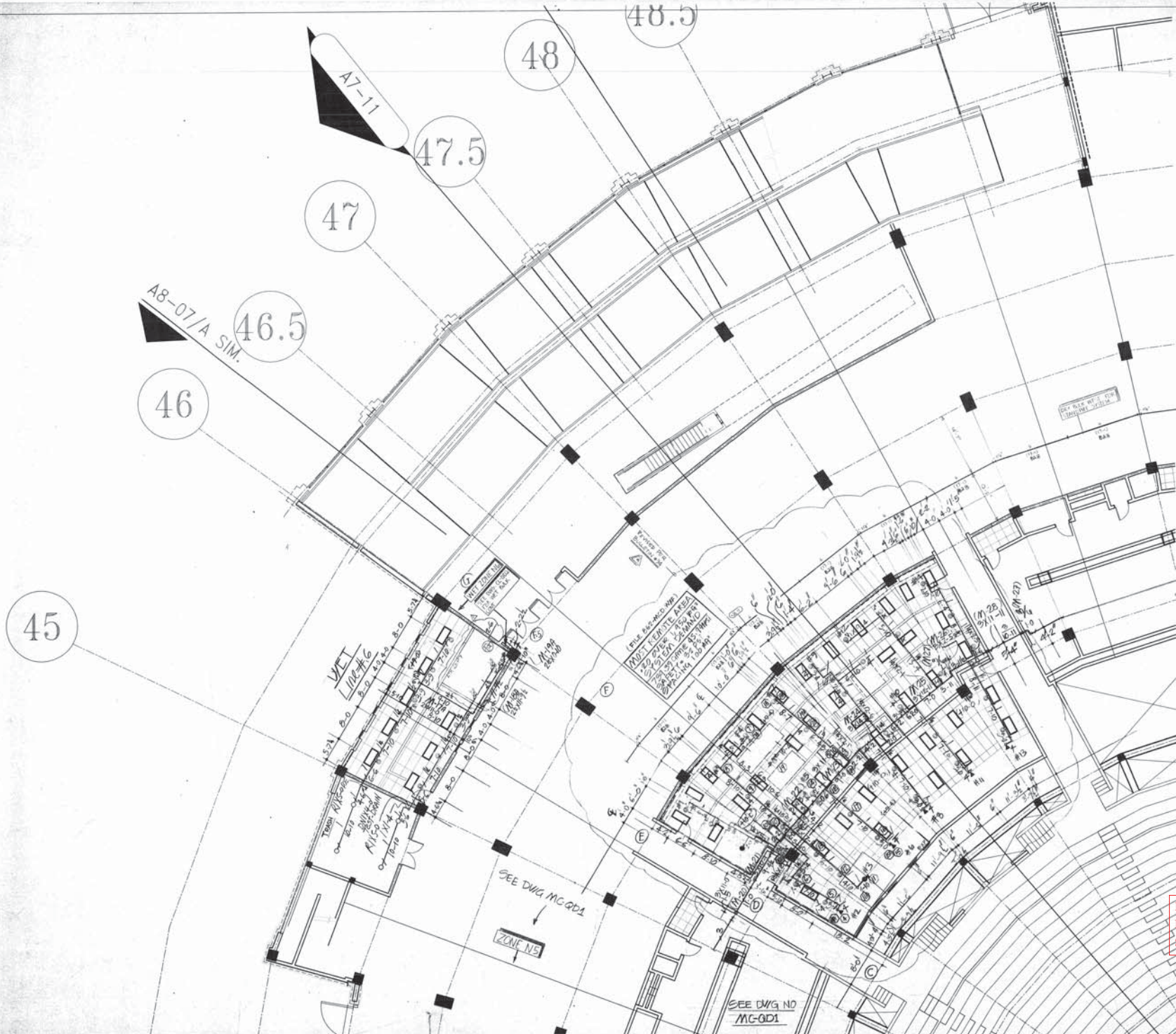
INSPECTOR:
 TO PREVENT FREEZING OF WATER IN WET PIPE SPRINKLER SYSTEMS,
 SPRINKLER PIPE MUST BE INSTALLED WITH AN ANTI-FREEZE SYSTEM.

SPRINKLER SCHEDULE & LEGEND	
Symbol	Description
(Symbol)	1 1/2" x 2 1/2" TYPICAL
(Symbol)	2" x 2 1/2" TYPICAL
(Symbol)	3" x 2 1/2" TYPICAL
(Symbol)	4" x 2 1/2" TYPICAL
(Symbol)	5" x 2 1/2" TYPICAL
(Symbol)	6" x 2 1/2" TYPICAL
(Symbol)	8" x 2 1/2" TYPICAL
(Symbol)	10" x 2 1/2" TYPICAL
(Symbol)	12" x 2 1/2" TYPICAL



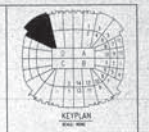
BALTIMORE RAVENS
 MAJOR CONCOURSE
 CAPITOL SPRINKLER
 CONTRACTING, INC.
 4825 CONSUMM ROAD SUITE 1020
 ANNAPOLIS, MD 21403
 (410) 293-9900

NORTH	
DESIGNED BY	DATE
CHECKED BY	DATE
APPROVED BY	DATE



SEE DWG. MC-003 →
 ZONE NS →

REF. DWG 32
 MAIN CONCOURSE QUAD D
 SEE EBL DWG FP-102



DESCRIPTION	DATE	BY	CHECKED
ISSUED FOR PERMIT	08/14/08	J. J. [unclear]	[unclear]
REVISION			
NO.	DESCRIPTION	DATE	BY
1	ISSUED FOR PERMIT	08/14/08	J. J. [unclear]
2	ISSUED FOR PERMIT	08/14/08	J. J. [unclear]
3	ISSUED FOR PERMIT	08/14/08	J. J. [unclear]
4	ISSUED FOR PERMIT	08/14/08	J. J. [unclear]
5	ISSUED FOR PERMIT	08/14/08	J. J. [unclear]
6	ISSUED FOR PERMIT	08/14/08	J. J. [unclear]
7	ISSUED FOR PERMIT	08/14/08	J. J. [unclear]
8	ISSUED FOR PERMIT	08/14/08	J. J. [unclear]
9	ISSUED FOR PERMIT	08/14/08	J. J. [unclear]
10	ISSUED FOR PERMIT	08/14/08	J. J. [unclear]

NO.	DESCRIPTION	DATE	BY	CHECKED
1	ISSUED FOR PERMIT	08/14/08	J. J. [unclear]	[unclear]
2	ISSUED FOR PERMIT	08/14/08	J. J. [unclear]	[unclear]
3	ISSUED FOR PERMIT	08/14/08	J. J. [unclear]	[unclear]
4	ISSUED FOR PERMIT	08/14/08	J. J. [unclear]	[unclear]
5	ISSUED FOR PERMIT	08/14/08	J. J. [unclear]	[unclear]
6	ISSUED FOR PERMIT	08/14/08	J. J. [unclear]	[unclear]
7	ISSUED FOR PERMIT	08/14/08	J. J. [unclear]	[unclear]
8	ISSUED FOR PERMIT	08/14/08	J. J. [unclear]	[unclear]
9	ISSUED FOR PERMIT	08/14/08	J. J. [unclear]	[unclear]
10	ISSUED FOR PERMIT	08/14/08	J. J. [unclear]	[unclear]



BALTIMORE RAVENS
 MAIN CONCOURSE
CAPITAL SPRINKLER CONTRACTING, INC.
 6500 CORBIN ROAD, COLUMBIA, MARYLAND 21048
 301-991-1833

DESIGNER	EVAL	DESIGNER
SCALE	1/8" = 1'-0"	SCALE
CHECKED BY	862	CHECKED
FILE NUMBER	862	FILE NUMBER
APPROVAL		APPROVAL
DATE	12-10-13	DATE

AS-BUILT
 DATE: 8-7-98