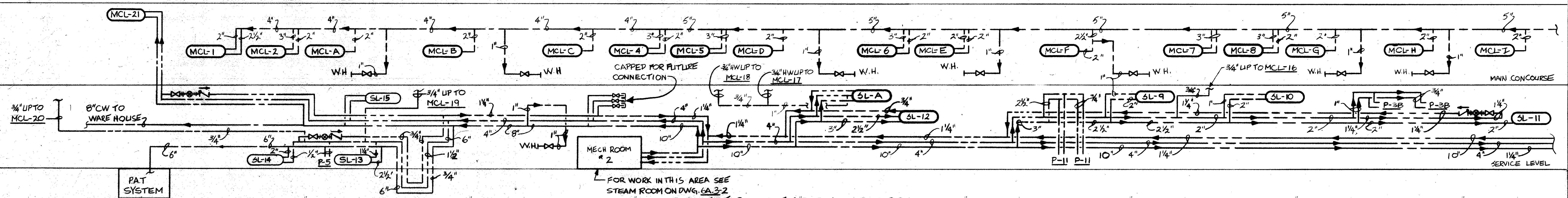
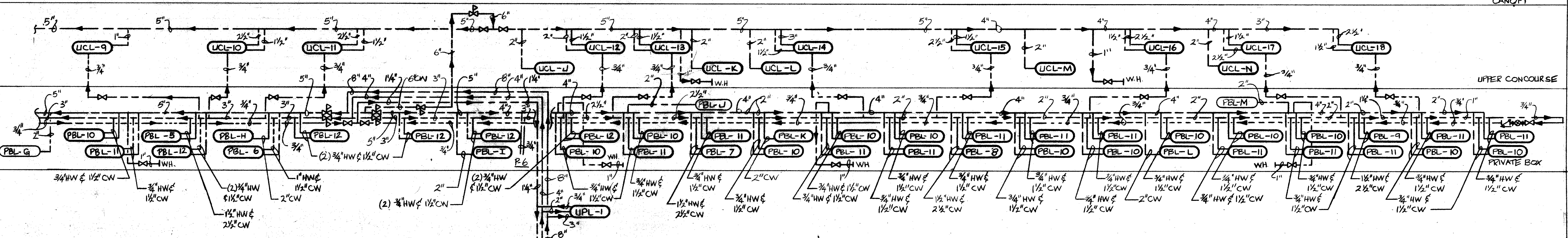


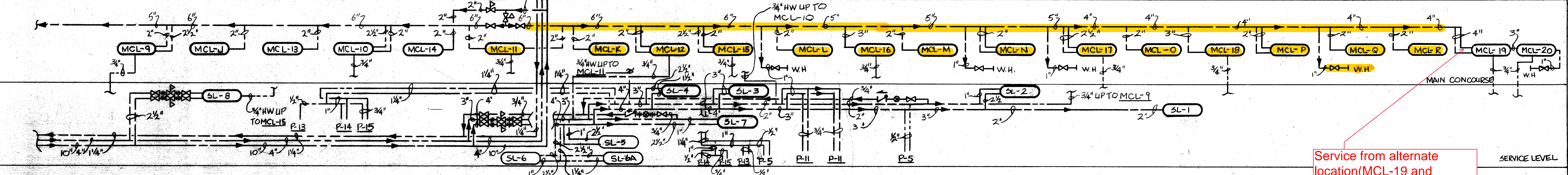
UPPER PRESS



DOMESTIC WATER RISER DIAGRAM
NO SCALE



UPPER PRESS LEVEL



DOMESTIC WATER RISER DIAGRAM
NO SCALE

Standardize all 15 taps off of main to 2". All taps off of main shall receive (1) 2" full port ball valve. Valve to be located on roof prior to penetrating EPDM. Eliminate defunct hose bib connections off of main that serve the seating bowl and exterior of building(-6). Pro-press copper to copper connections are permitted for pipe sized 2" and below. Demo all steel piping off of main and entering any space below and replace with 2" copper. Install new copper piping and full port ball valves in all existing locations where OSY or ball valves are currently installed (15 locations, approximately 6 restrooms (2 valves per) and 9 concession areas (1 valve per)).

Service from alternate location (MCL-19 and MCL-20)

GOVERNOR
WILLIAM DONALD SCHAEFER

Maryland Stadium Authority
Herbert J. Belgrad
Chairman
William K. Hellman
John P. McDonough
Joshua I. Smith
W. Robert Wallis
Bruce H. Williams, P.E.
Executive Director

h+k
SPORT

HELLMUTH, OBATA &
KASSABAUM, INC.
ARCHITECTURE
INTERIORS PLANNING
GRAPHICS ENGINEERING
383 WEST 87th STREET
SUITE 700
KANSAS CITY, MISSOURI 64105
913-251-1575

Construction Manager
Baron Malow/Svendrup
8503 Presidential Parkway
Suite 202
Upper Marlboro, Maryland 20772

Consultants
Bliss & Nyberg, Inc.
Structural Engineers
Kidd Consultants, Inc.
Mechanical, Electrical,
Plumbing Engineers
Rummel, Kieper & Kahl
Civil Engineers
The Joiner-Rose Group
Acoustical Engineers
Wallace, Roberts & Todd
Landscape Architecture
Catherine Mahan & Associates
Landscape Architects
Sheldale Associates, Inc.
Survey Engineers
TLB Associates Inc.
Geotechnical Engineers

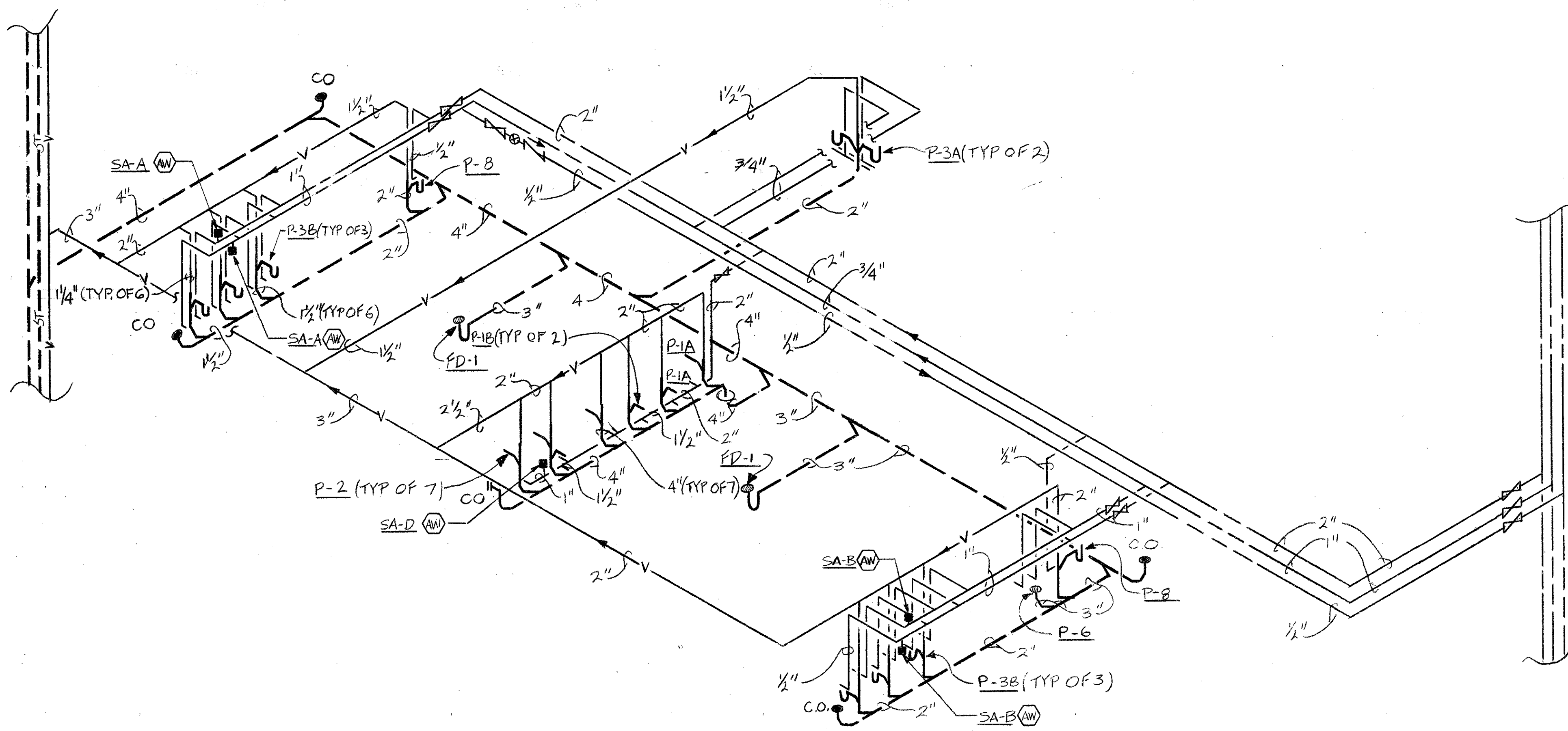
THE NEW BASEBALL PARK
for
THE MARYLAND STADIUM AUTHORITY
and
THE BALTIMORE ORIOLES
BALTIMORE, MARYLAND

REVISIONS	NO.	DATE	DESCRIPTION

KEY PLAN	PROJECT NO.	ISSUED
	EA-5-12	6-15-92

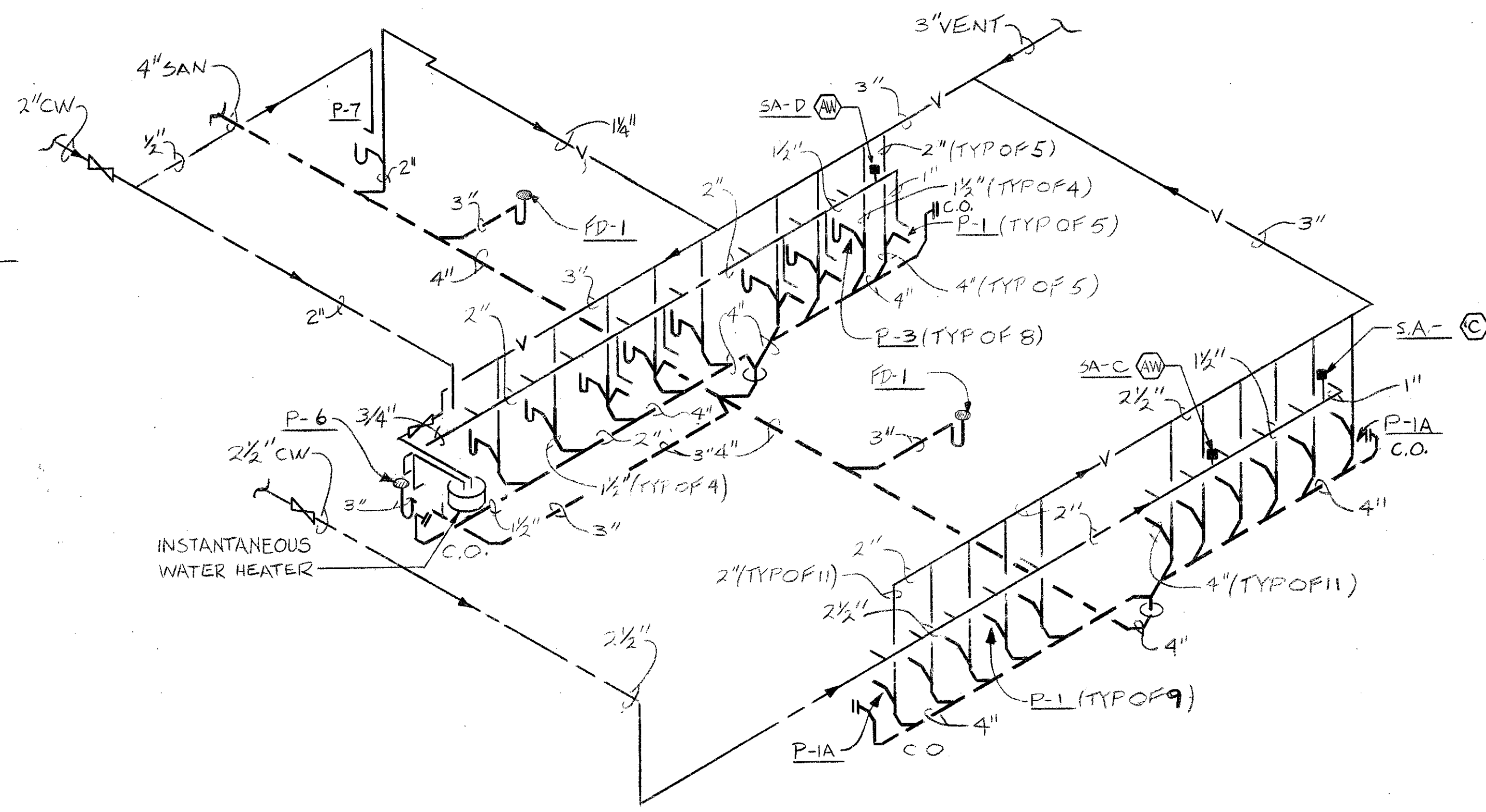
SHEET TITLE
HOT & COLD WATER RISER
DIAGRAM-1

CATEGORY SUBCATEGORY SHEET
EA-5-12

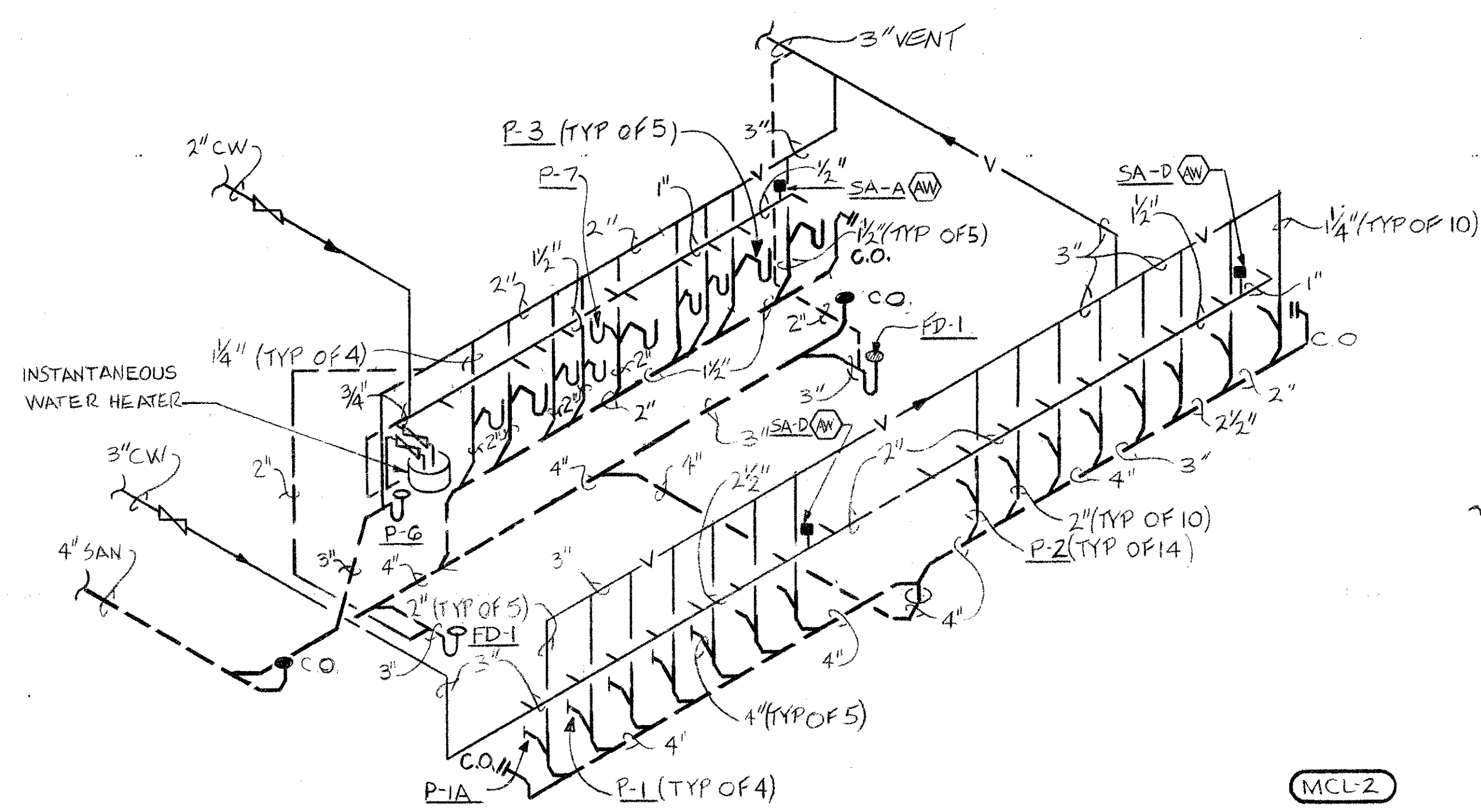


LOWER PRESS LEVEL RISER DIAGRAM
NO SCALE

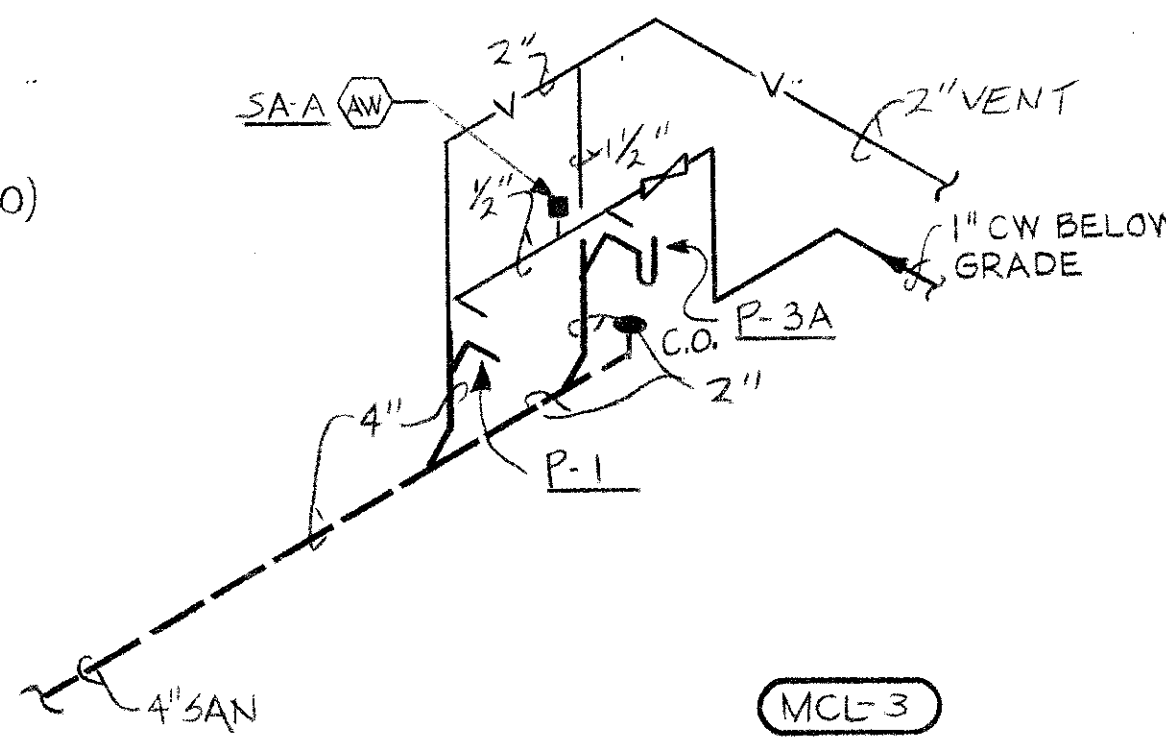
(LPL-1)



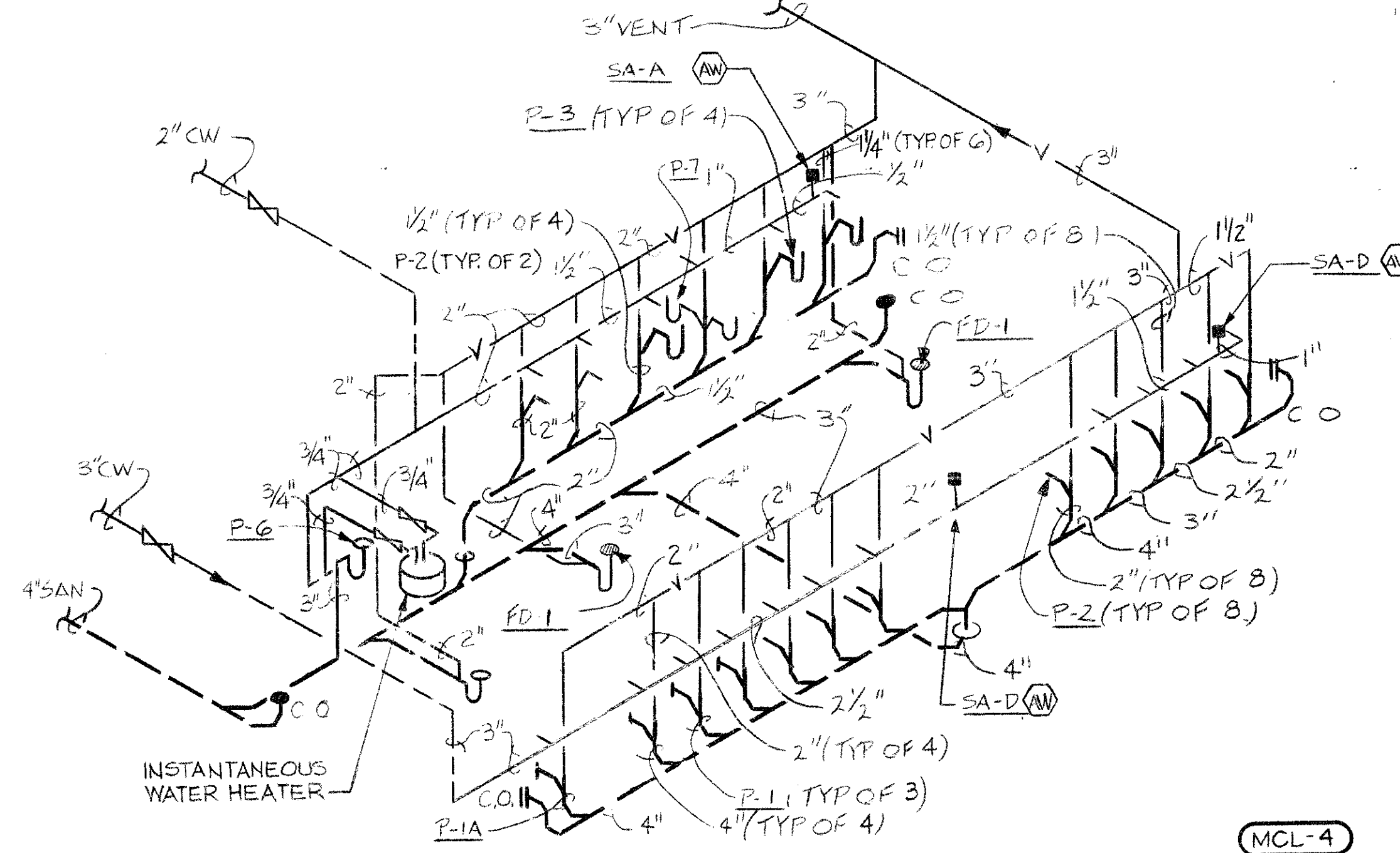
(MCL-1)



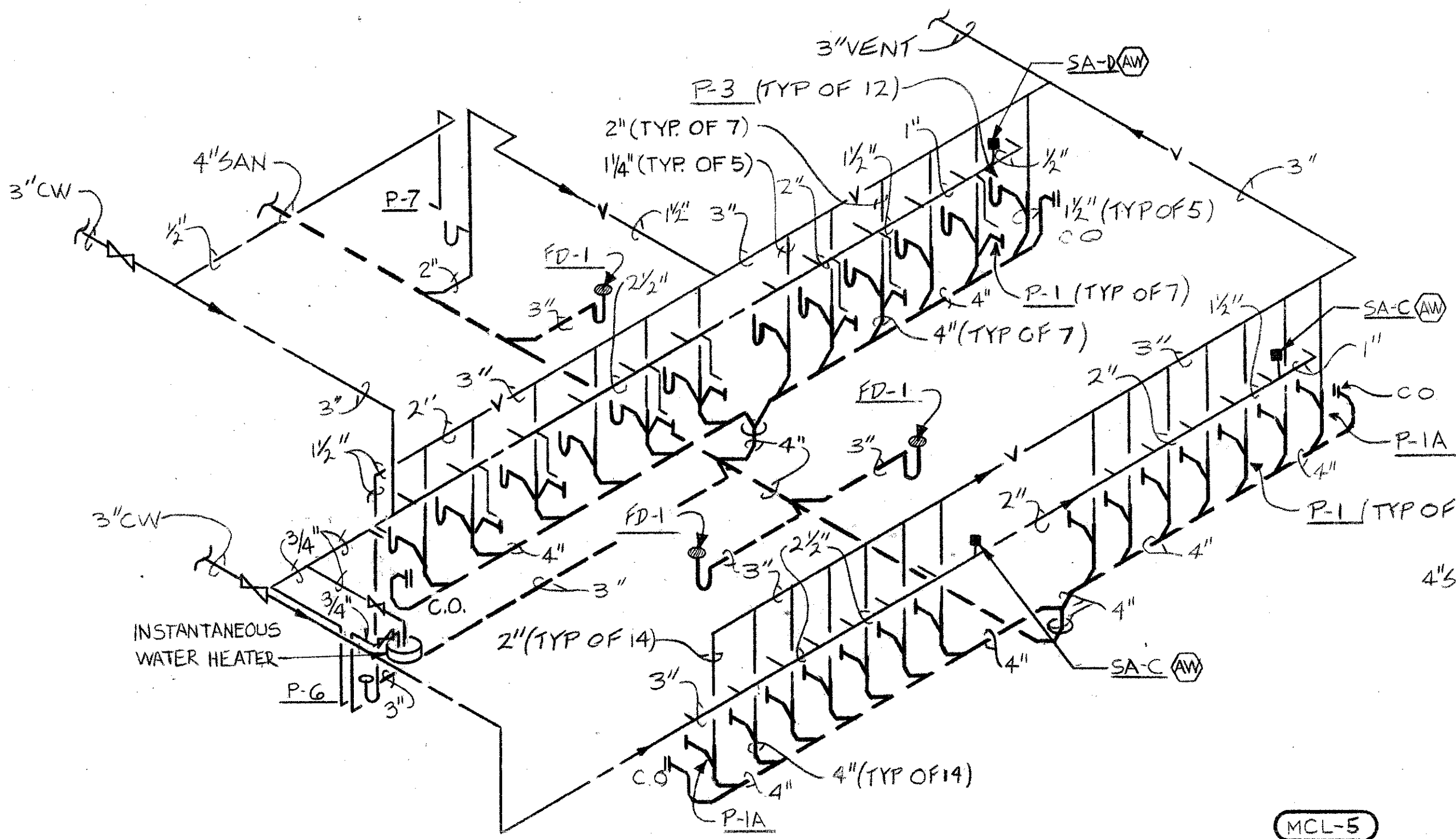
(MCL-2)



(MCL-3)

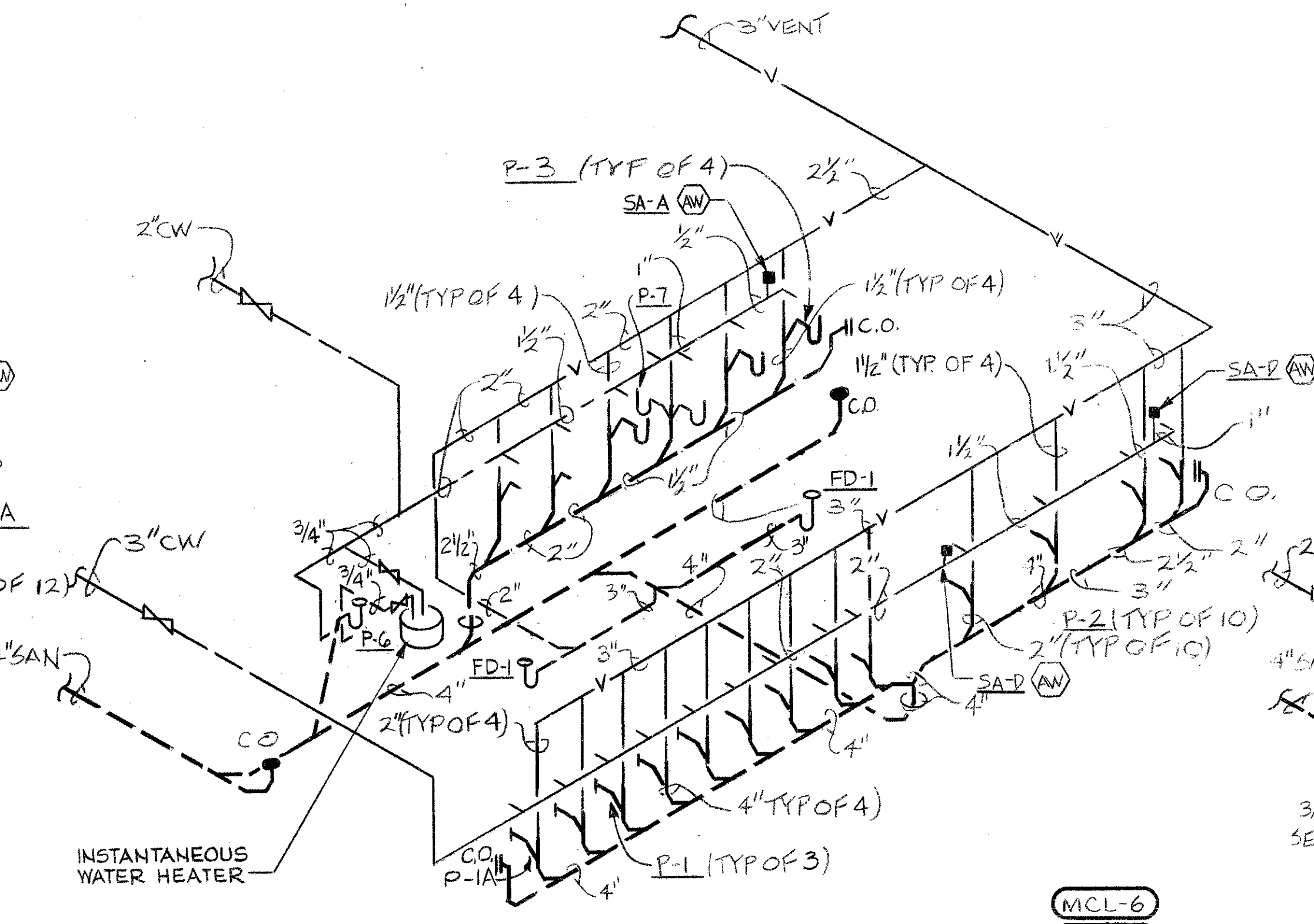


(MCL-4)



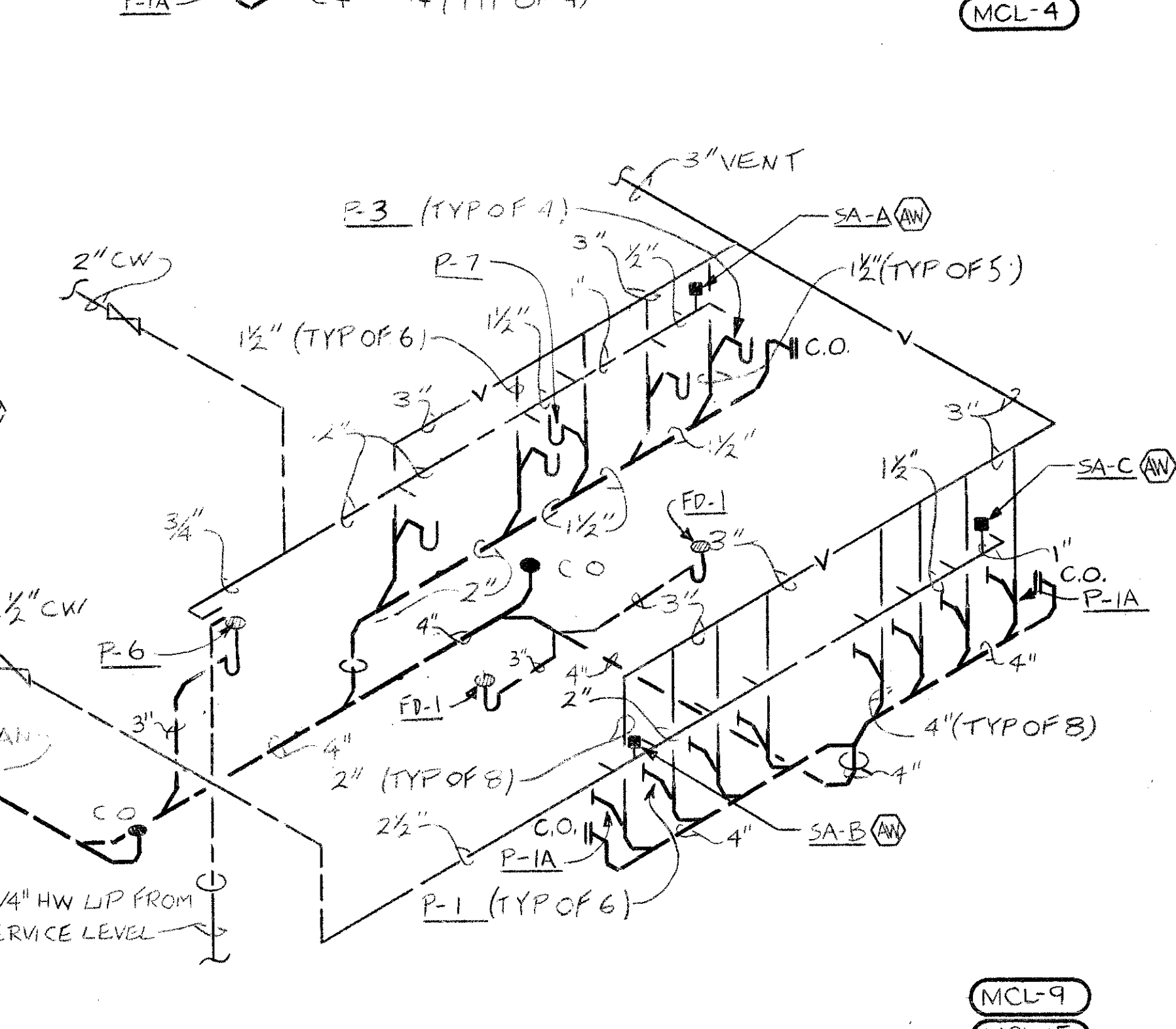
(MCL-5)

(MCL-7)



(MCL-6)

(MCL-8)



(MCL-9)

(MCL-15)

MAIN CONCOURSE LEVEL TOILET ROOM
RISER DIAGRAMS
NO SCALE

ADDENDUM # 3
THIS SHEET SUPERSEDES
SUBMISSION SHEET

GOVERNOR
WILLIAM DONALD SCHAEFER

Maryland Stadium Authority
Herbert J. Belgrad
Chairman
William K. Hellmann
John P. McDonough
Joshua I. Smith
W. Robert Wallis
Bruce H. Hoffman, P.E.
Executive Director

h+k
SPORT

HELLMUTH, OBATA &
KASSABAUM, INC.
ARCHITECTURE
INTERIORS PLANNING
GRAPHICS ENGINEERING
323 WEST 8TH STREET
SUITE 202
KANSAS CITY, MISSOURI 64105
816 221-1576

Construction Manager
Barton Malow/Svedrup
8903 Presidential Parkway
Suite 202
Upper Marlboro, Maryland 20772

Consultants
Bliss & Nyirny, Inc.
Structural Engineers
Kiddie Consultants, Inc.
Mechanical, Electrical,
Plumbing Engineers
Rummel, Klepper & Kahl
Site/Civil Engineers
The Joiner-Rose Group
Acoustical Engineering
Wallace, Roberts & Todd
Landscape Architecture
Catherine Mahan & Associates
Landscape Architects
Sheladia Associates, Inc.
Survey Engineers
TLB Associates Inc.
Geotechnical Engineers

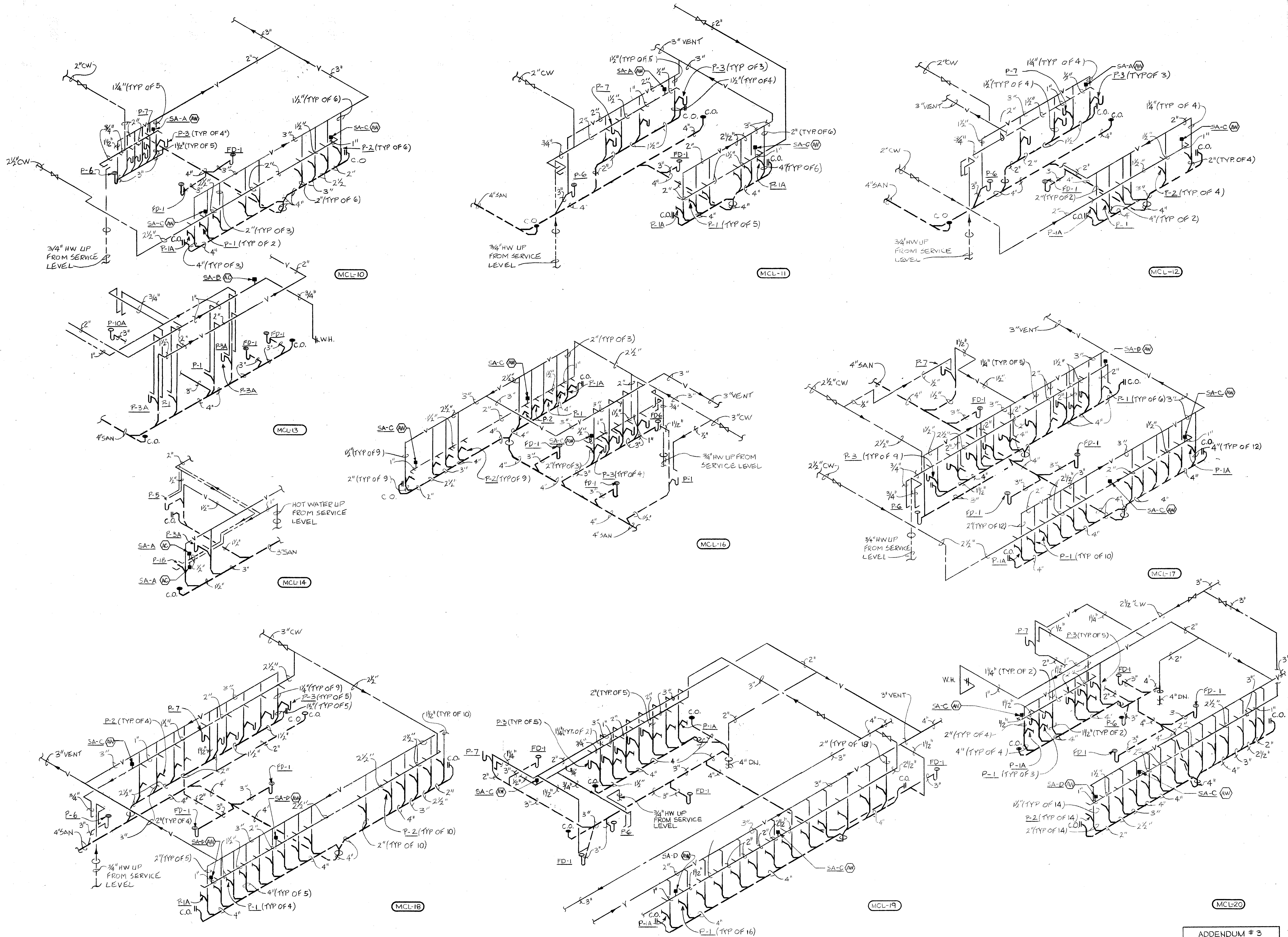
for
THE MARYLAND STADIUM AUTHORITY
and
THE BALTIMORE ORIOLES
BALTIMORE, MARYLAND

REVISIONS
NO DATE DESCRIPTION

1 7/22/90 ADDENDUM # 3

KEY PLAN
PROJECT NO
04-88015
ISSUED
6-15-90
DRAWN
AWC
REVIEWED
AL

SHEET TITLE
SANITARY & VENT RISER
DIAGRAMS
CATEGORY SUBCATEGORY SHEET
1A SA-5-6



MAIN CONCOURSE LEVEL TOILET ROOM
 RISER DIAGRAMS
 NO SCALE

ADDENDUM # 3
 THIS SHEET SUPERSEDES
 SUBMISSION SHEET

GOVERNOR
 WILLIAM DONALD SCHAEFER

Maryland Stadium Authority
 Herbert J. Belgrad
 Chairman
 William K. Hellmuth
 John P. McDonough
 Joshua I. Smith
 W. Robert Wallis
 Bruce H. Hoffman, P.E.
 Executive Director

h+k
SPORT

HELLMUTH, OBATA &
 KASSABAUM, INC.
 ARCHITECTURE
 INTERIORS PLANNING
 GRAPHICS ENGINEERING
 323 WEST 8TH STREET
 SUITE 200
 KANSAS CITY, MISSOURI 64105
 816 221-1576

Construction Manager
 Barton Malow/Sverdrup
 8903 Presidential Parkway
 Suite 202
 Upper Marlboro, Maryland 20772

Consultants
 Bliss & Nystray, Inc.
 Structural Engineers
 Kiddie Consultants, Inc.
 Mechanical, Electrical,
 Plumbing Engineers
 Rummel, Klepper & Kahl
 Site/Civil Engineers
 The Joiner-Rose Group
 Acoustical Engineering
 Wallace, Roberts & Todd
 Landscape Architecture
 Catherine Mahan & Associates
 Landscape Architects
 Sheldis Associates, Inc.
 Survey Engineers
 TLB Associates Inc.
 Geotechnical Engineers

THE NEW BASEBALL PARK
 for
 THE MARYLAND STADIUM AUTHORITY
 and
 THE BALTIMORE ORIOLES
 BALTIMORE, MARYLAND

REVISIONS	NO.	DATE	DESCRIPTION
A	1	7/28/90	ADDENDUM # 3

KEY PLAN	PROJECT NO.	ISSUED
04-BB015	6-15-90	
DRAWN	AWK	REVIEWED
AL	AL	AL
SHEET TITLE	MAIN CONCOURSE ISOMETRIC DIAGRAMS	
CATEGORY	SUBCATEGORY	SHEET
7.1	SA	5-7